

80C00 Series Optical Sampling Modules User Manual



071-0435-10

Tektronix

**80C00 Series
Optical Sampling Modules
User Manual**

Copyright © Tektronix. All rights reserved. Licensed software products are owned by Tektronix or its subsidiaries or suppliers, and are protected by national copyright laws and international treaty provisions.

Tektronix products are covered by U.S. and foreign patents, issued and pending. Information in this publication supersedes that in all previously published material. Specifications and price change privileges reserved.

TEKTRONIX and TEK are registered trademarks of Tektronix, Inc.

Contacting Tektronix

Tektronix, Inc.
14200 SW Karl Braun Drive
P.O. Box 500
Beaverton, OR 97077
USA

For product information, sales, service, and technical support:

- In North America, call 1-800-833-9200.
- Worldwide, visit www.tektronix.com to find contacts in your area.

Warranty

Tektronix warrants that this product will be free from defects in materials and workmanship for a period of one (1) year from the date of shipment. If any such product proves defective during this warranty period, Tektronix, at its option, either will repair the defective product without charge for parts and labor, or will provide a replacement in exchange for the defective product. Parts, modules and replacement products used by Tektronix for warranty work may be new or reconditioned to like new performance. All replaced parts, modules and products become the property of Tektronix.

In order to obtain service under this warranty, Customer must notify Tektronix of the defect before the expiration of the warranty period and make suitable arrangements for the performance of service. Customer shall be responsible for packaging and shipping the defective product to the service center designated by Tektronix, with shipping charges prepaid. Tektronix shall pay for the return of the product to Customer if the shipment is to a location within the country in which the Tektronix service center is located. Customer shall be responsible for paying all shipping charges, duties, taxes, and any other charges for products returned to any other locations.

This warranty shall not apply to any defect, failure or damage caused by improper use or improper or inadequate maintenance and care. Tektronix shall not be obligated to furnish service under this warranty a) to repair damage resulting from attempts by personnel other than Tektronix representatives to install, repair or service the product; b) to repair damage resulting from improper use or connection to incompatible equipment; c) to repair any damage or malfunction caused by the use of non-Tektronix supplies; or d) to service a product that has been modified or integrated with other products when the effect of such modification or integration increases the time or difficulty of servicing the product.

THIS WARRANTY IS GIVEN BY TEKTRONIX WITH RESPECT TO THE PRODUCT IN LIEU OF ANY OTHER WARRANTIES, EXPRESS OR IMPLIED. TEKTRONIX AND ITS VENDORS DISCLAIM ANY IMPLIED WARRANTIES OF MERCHANTABILITY OR FITNESS FOR A PARTICULAR PURPOSE. TEKTRONIX' RESPONSIBILITY TO REPAIR OR REPLACE DEFECTIVE PRODUCTS IS THE SOLE AND EXCLUSIVE REMEDY PROVIDED TO THE CUSTOMER FOR BREACH OF THIS WARRANTY. TEKTRONIX AND ITS VENDORS WILL NOT BE LIABLE FOR ANY INDIRECT, SPECIAL, INCIDENTAL, OR CONSEQUENTIAL DAMAGES IRRESPECTIVE OF WHETHER TEKTRONIX OR THE VENDOR HAS ADVANCE NOTICE OF THE POSSIBILITY OF SUCH DAMAGES.

[W2 – 15AUG04]

Table of Contents

General Safety Summary	iv
Environmental Considerations	vi
Preface	vii
Manual Structure.....	vii
Related Documentation	vii
Getting Started	1
Product Description.....	2
Options and Accessories	6
Installation.....	9
Operating Basics.....	13
Usage.....	13
System Interaction	15
Front Panel Controls.....	16
Commands From the Main Instrument Front Panel.....	18
Programmer Interface Commands	19
User Adjustments	19
Optimizing Measurement Accuracy	20
Cleaning	25
Reference	27
Wavelength, Filter, and Bandwidth Selection	27
Clock and Data Recovery.....	28
Optical Bandwidth.....	29
Extinction Ratio Calibration.....	31
Specifications	33
Glossary	
Index	

List of Figures

Figure 1: Module compartments.....	9
Figure 2: Installing a large module.....	11
Figure 3: Connecting optical cables correctly.....	14
Figure 4: Incorrectly connecting optical cables.....	14
Figure 5: Typical Optical module front panels, 80C01-CR and 80C12-10G shown.....	17
Figure 6: System Vertical menu.....	19

List of Tables

Table 1: Application software version required	1
Table 2: Optical module features (80C02).....	2
Table 3: Optical module features (80C07B, 80C08C, and 80C12)	3
Table 4: Optical module features (80C10, 80C10B, 80C11, and 80C25GBE)	4
Table 5: Available options	6
Table 6: Standard accessories	8
Table 7: Optional accessories	8
Table 8: Optimum optical signal levels	15
Table 9: Clock recovery outputs	18
Table 10: Wavelength, Filter, and Bandwidth selections.....	27
Table 11: Optical modules - Descriptions	33
Table 12: Optical modules - Acquisition	36
Table 13: Optical power meter	57
Table 14: Optical modules - Clock recovery options (CR, CR1, CR2, CR3, and CR4).....	57
Table 15: Acceptable signal types and patterns	63
Table 16: Optical modules - Mechanical	63

General Safety Summary

Review the following safety precautions to avoid injury and prevent damage to this product or any products connected to it.

To avoid potential hazards, use this product only as specified.

Only qualified personnel should perform service procedures.

While using this product, you may need to access other parts of a larger system. Read the safety sections of the other component manuals for warnings and cautions related to operating the system.

To Avoid Fire or Personal Injury

Ground the Product. This product is indirectly grounded through the grounding conductor of the mainframe power cord. To avoid electric shock, the grounding conductor must be connected to earth ground. Before making connections to the input or output terminals of the product, ensure that the product is properly grounded.

Observe All Terminal Ratings. To avoid fire or shock hazard, observe all ratings and markings on the product. Consult the product manual for further ratings information before making connections to the product.

The inputs are not rated for connection to mains or Category II, III, or IV circuits.

Do not apply a potential to any terminal, including the common terminal, that exceeds the maximum rating of that terminal.

Do Not Operate Without Covers. Do not operate this product with covers or panels removed.

Do Not Operate With Suspected Failures. If you suspect that there is damage to this product, have it inspected by qualified service personnel.

Avoid Exposed Circuitry. Do not touch exposed connections and components when power is present.

Wear Eye Protection. Wear eye protection if exposure to high-intensity rays or laser radiation exists.

Do Not Operate in Wet/Damp Conditions.

Do Not Operate in an Explosive Atmosphere.

Keep Product Surfaces Clean and Dry.

Provide Proper Ventilation. Refer to the manual's installation instructions for details on installing the product so it has proper ventilation.

Terms in this Manual These terms may appear in this manual:



WARNING. *Warning statements identify conditions or practices that could result in injury or loss of life.*



CAUTION. *Caution statements identify conditions or practices that could result in damage to this product or other property.*

Symbols and Terms on the Product

These terms may appear on the product:

- DANGER indicates an injury hazard immediately accessible as you read the marking.
- WARNING indicates an injury hazard not immediately accessible as you read the marking.
- CAUTION indicates a hazard to property including the product.

The following symbol(s) may appear on the product:



CAUTION
Refer to Manual



Protective Ground
(Earth) Terminal

Environmental Considerations

This section provides information about the environmental impact of the product.

Product End-of-Life Handling

Observe the following guidelines when recycling an instrument or component:

Equipment Recycling. Production of this equipment required the extraction and use of natural resources. The equipment may contain substances that could be harmful to the environment or human health if improperly handled at the product's end of life. In order to avoid release of such substances into the environment and to reduce the use of natural resources, we encourage you to recycle this product in an appropriate system that will ensure that most of the materials are reused or recycled appropriately.



This symbol indicates that this product complies with the applicable European Union requirements according to Directives 2002/96/EC and 2006/66/EC on waste electrical and electronic equipment (WEEE) and batteries. For information about recycling options, check the Support/Service section of the Tektronix Web site (www.tektronix.com).

Restriction of Hazardous Substances

This product has been classified as Monitoring and Control equipment, and is outside the scope of the 2002/95/EC RoHS Directive.

Preface

This is the user manual for the 80C00 Series Optical Modules and their available options. It includes the following information:

- Describes the capabilities of the modules and how to install them
- Explains how to operate the modules: how to control acquisition, processing, and input/output of information
- Lists specifications of the modules

Go to the Tektronix Web site at <http://www.tektronix.com> for the latest revision of the user documentation. Select the Manuals link under the *myTek Resource Center* heading, then enter the part number or product name to locate the document.

You can also order a printed version of this manual. (See page 8, *Optional Accessories*.)

Manual Structure

This manual is composed of the following chapters:

- *Getting Started* shows you how to configure and install your optical module.
- *Operating Basics* describes controlling the module using the front panel and the instrument user interface.
- *Reference* provides information on wavelength selection, clock recovery, and optical bandwidth.
- *Specifications* contains specifications for the 80C00 Series Optical Modules.

Related Documentation

This document covers installation and usage of the sampling module and its features. For information about the main instrument in which the sampling module is used, refer to the user documents and online help provided with your main instrument.

Getting Started

The 80C00 Series Optical Modules and their available options are high-performance optical modules that support high bandwidth telecom and datacom standards. These modules can be installed in the following main instruments (mainframes):

- DSA8200 Digital Serial Analyzer
- CSA8000, CSA8000B, and CSA8200 Communications Signal Analyzers
- TDS8000, TDS8000B, and TDS8200 Digital Sampling Oscilloscopes

Proper operation of the optical sampling modules requires that the appropriate application software is installed on the main instrument. The following table lists the mainframe application software versions and the optical modules supported.

To display the version installed, select *About* from the Help menu of the main instrument.

Table 1: Application software version required

Application software version	Modules supported
1.0 ¹	80C01, 80C01-CR, 80C02, 80C02-CR
1.4 ¹	Added: 80C10
1.5 ¹	Added: 80C07B, 80C07B-CR1 80C08C, 80C08C-CR1, 80C08C-CR2, 80C08C-CR4, 80C11, 80C11-CR1, 80C11-CR2, 80C11-CR3, 80C11-CR4
2.0.1.3 ^{2, 3}	Added: 80C12 (limited)
2.0.1.5 ³	Added: 80C12
5.0 or greater ⁴	Added: 80C10B, 80C10B Option F1, 80C02 Option 01, 80C08C Option 01, 80C11 Option 01, 80C12 Option 01, 80C25GBE

¹ Product application software version 1.x requires the Windows 98 operating system.Windows 98:application software requirement

² Product application software version 2.x requires the Windows 2000 operating system.Windows 2000:application software requirement

³ Product application software version 2.0.1.3 should be replaced with the latest version available for download from the Tektronix Web site

⁴ Product application software version 5.x requires the Windows XP operating system.Windows XP:application software requirement

Product Description

The optical modules provide the features shown in the following tables. (See Table 3.) (See Table 4.)

A table in the *Reference* section provides wavelength selections, filter and bandwidth specifications for each module. (See Table 10 on page 27.)

A figure in the *Operating Basics* section shows the module controls, connectors, and indicators. (See Figure 5 on page 17.)

Table 2: Optical module features (80C02)

Feature	80C02 ¹
Number of input channels	1
Effective wavelength range	1100 nm to 1650 nm
Supported standards or data filtering rates	OC-192/STM-64
Clock recovery, option	OC-192/STM-64
Absolute maximum nondestructive optical input ²	5 mW average power; 10 mW peak power at wavelength with highest relative responsivity.
Internal Fiber Diameter	9 mm/125 μ m single mode ³
Optical return loss	> 30 dB typical
Minimum optical bandwidth at optical connector	> 30 GHz
Output zero	< 10 μ W immediately after dark calibration
Independent channel deskew	Standard
Offset capability at front of module	Standard
Power meter	Standard

¹ Some values in the table are typical.

² The optical input powers below non-destructive levels may exceed saturation and compression limits of the module.

³ Compatible with single-mode fiber of equal or smaller diameter.

Table 3: Optical module features (80C07B, 80C08C, and 80C12)

Feature	80C07B ¹	80C08C ¹	80C12 ¹
Number of input channels	1	1	1
Effective wavelength range	700 nm to 1650 nm	700 nm to 1650 nm	700 nm to 1650 nm
Supported standards or data filtering rates	<i>Standard</i> OC-48 / STM-16, 2 Gigabit Ethernet (ENET2500/2GBE), Infiniband <i>Optional</i> ² OC-3 / STM-1, OC-12 / STM-4, FibreChannel (FC1063/FC), Gigabit Ethernet (ENET1250/GBE), 2G FibreChannel (FC2125/2FC)	9.95328 Gb/s (10GBASE-W), 9.95328 Gb/s (OC-192/STM64), 10.3125 (10GBASE-R), 10.51875 (10GFC), 10.66423 Gb/s (G.975 FEC), 10.709225 Gb/s (G.709 FEC), 11.10 Gb/s (10GbE FEC), 11.317 Gb/s (10GFC FEC)	<i>Multi Gigabit Options</i> ³ 1.0625 Gb/s (FC1063) 2.125 Gb/s (FC2125) 3.125 Gb/s (10GBase-X4) 3.188 Gb/s (10GFC-X4) 3.318 Gb/s (VSR-5) 4.250 Gb/s (FC4250) <i>10 Gigabit Option (Option 10G)</i> 9.95328 Gb/s (10GBase-W), 9.95328 Gb/s (OC-192/STM64), 10.3125 Gb/s (10GBase-R), 10.51875 Gb/s (10GFC), 10.66423 Gb/s (G.975 FEC), 10.709225 Gb/s (G.709 FEC), 11.10 Gb/s (10GbE FEC), 11.317 Gb/s (10GFC FEC)
Clock recovery option	155.52 Mb/s (OC-3/STM-1), 622.08 Mb/s (OC-12/STM-4), 1062.5 Mb/s (FC1063/FC), 1250 Mb/s (ENET1250/GBE), 2125 Mb/s (FC2125/2FC), 2488.32 Mb/s (OC-48/STM-16), 2500 Mb/s (ENET2500/2GBE), 2500 Mb/s (Infiniband), 2666.06 Mb/s (OC-48-FEC)	9.95328 Gb/s (10GBASE-W/ OC-192/STM-64) (CR-1), 10.3125 Gb/s (10GBASE-R) (CR-1 & CR-2), 10.51875 Gb/s (10GFC) (CR-2 only), Continuous-rate from 9.8 Gb/s to 12.6 Gb/s (CR-4) ⁴	Clock recovery supported with the use of the 80A05 or 80A07 Electrical Clock Recovery module (purchased separately).
Absolute maximum nondestructive optical input ⁵	5 mW average power; 10 mW peak power at wavelength with highest relative responsivity.	1 mW average power; 10 mW peak power for 60 ms.	1 mW average power; 10 mW peak power for 60 ms.
Internal fiber diameter	62.5 mm/125 µm multimode mode ⁶	62.5 mm/125 µm multimode mode ⁶	62.5 mm/125 µm multimode mode ⁶
Optical return loss	> 14 dB for multimode fiber > 24 dB for single-mode fiber	> 14 dB for multimode fiber > 24 dB for single-mode fiber	> 14 dB for multimode fiber > 24 dB for single-mode fiber
Minimum optical bandwidth at optical connector	> 2.3 GHz	> 9.5 GHz	> 8.5 GHz > 9.5 GHz with Option 10G

Feature	80C07B ¹	80C08C ¹	80C12 ¹
Output zero	< 500nW immediately after dark calibration $\pm 2\%$ (vertical offset)	< 1uW immediately after dark calibration $\pm 2\%$ (vertical offset)	< 1uW immediately after dark calibration $\pm 2\%$ (vertical offset)
Independent channel deskew	Standard	Standard	Standard
Offset capability at front of module	Standard	Standard	Standard
Power meter	Standard	Standard	Standard

¹ Some values in the table are typical.

² The 80C07B is shipped with five reference receiver filters. Three are standard, with the two remaining configured at the time of purchase. (See Table 5 on page 6.)

³ The 80C12 is available with a variety of options that support 2 to 4 filters. (See Table 5 on page 6.)

⁴ Continuous-rate clock recovery supporting any standard or user-definable rate in the range from 9.8 Gb/s to 12.6 Gb/s.

⁵ The optical input powers below non-destructive levels may exceed saturation and compression limits of the module.

⁶ Compatible with single-mode fiber of equal or smaller diameter.

Table 4: Optical module features (80C10, 80C10B, 80C11, and 80C25GBE)

Feature	80C10, 80C10B, 80C25GBE ¹	80C11 ¹
Number of input channels	1 ²	1
Effective wavelength range	1310 nm \pm 20 nm 1520 nm to 1620 nm	1100 nm to 1650 nm
Supported standards or data filtering rates	80C10: 30 GHz 65 GHz 39.813 Gb/s OC768/STM256 43.018 Gb/s G.709 FEC 80C10B: 30 GHz 65 GHz 80 GHz 39.813 Gb/s OC768/STM256 43.018 Gb/s G.709 FEC 41.25 Gb/s 40GBase-xR1 80C10B-F1: 65 GHz 39.813 Gb/s OC768/STM256 43.018 Gb/s G.709 FEC 41.25 Gb/s 40GBase-xR1 25.781 Gb/s 100GBase-xR4 27.739 Gb/s 100GBase-xR4 FEC 80C25GBE: 65 GHz 25.781 Gb/s 100GBase-xR4 27.739 Gb/s 100GBase-xR4 FEC	OC-192/STM-64 (9.953 Gb/s), 10GBASE-W (9.953 Gb/s), 10GBASE-R (10.31 Gb/s), 10GFC (10.518 Gb/s), G.975 FEC (10.66 Gb/s), G.709 FEC (10.71 Gb/s), 10GbE FEC (11.10 Gb/s), 10GFC FEC (11.317 Gb/s)

Table 4: Optical module features (80C10, 80C10B, 80C11, and 80C25GBE) (cont.)

Feature	80C10, 80C10B, 80C25GBE ¹	80C11 ¹
Clock recovery option	None	9.95328 Gb/s (10GBASE-W/OC-192/STM-64) (CR-1, CR2, & CR-3), 10.66423 Gb/s (CR-2), 10.70922 Gb/s (CR-3), Continuous-rate from 9.8 Gb/s to 12.6 Gb/s (CR-4) ³
Absolute maximum nondestructive optical input ⁴	20 mW average power; 60 mW peak power at wavelength with highest relative responsivity.	5 mW average power; 10 mW peak power at wavelength with highest relative responsivity
Internal fiber diameter	9 mm/125 μm single mode ⁵	
Optical return loss	> 30 dB	
Minimum optical bandwidth	80C10 > 60 GHz, minimum > 65 GHz, typical 80C10B > 75 GHz, minimum > 80 GHz, typical 80C10B-F1 and 80C25GBE > 60 GHz, minimum > 65 GHz, typical	> 30 GHz
Output zero	1550 nm: ± [25 μW + 4% Vertical Offset] 1310 nm: ± [35 μW + 4% Vertical Offset]	Up to 11.317 Gb/s settings: < 10 μW ± 2% (vertical offset) 20GHz, 30GHz settings: < 10 μW ± 4% (vertical offset)
Independent channel deskew	Standard	
Offset capability at front of module	Standard	
Power meter	Standard	

¹ Some values in the table are typical.

² The 80C10, 80C10B, and 80C25GBE have two separate optical inputs, one for 1310 nm and one for 1550 nm.

³ Continuous-rate clock recovery supporting any standard or user-definable rate in the range from 9.8 Gb/s to 12.6 Gb/s.

⁴ The optical input powers below non-destructive levels may exceed saturation and compression limits of the module.

⁵ Compatible with single-mode fiber of equal or smaller diameter.

Options and Accessories

This section lists the standard and optional accessories available for the sampling modules.

Options The following options can be ordered for the sampling modules:

Table 5: Available options

Module	Option	Description
80C02	Option CR	Adds 9.95328 Gb/s clock recovery
	Option 01	Adds Extinction Ratio calibration
80C07B	Option CR1	Adds 155/622/1063/1250/2125/2488/2500/2666 Mb/s clock recovery
	Option F1	Adds reference receiver filters OC-3 (155 Mb/s) and OC-12 (622 Mb/s)
	Option F2	Adds reference receiver filters OC-3 (155 Mb/s) and FibreChannel (1063 Mb/s)
	Option F3	Adds reference receiver filters OC-3 (155 Mb/s) and Gigabit Ethernet (1250 Mb/s)
	Option F4	Adds reference receiver filters OC-3 (155 Mb/s) and 2G FibreChannel (2125 Mb/s)
	Option F5	Adds reference receiver filters OC-12 (622 Mb/s) and FibreChannel (1063 Mb/s)
	Option F6	Adds reference receiver filters OC-12 (622 Mb/s) and Gigabit Ethernet (1250 Mb/s)
	Option F7	Adds reference receiver filters OC-12 (622 Mb/s) and 2G FibreChannel (2125 Mb/s)
	Option F8	Adds reference receiver filters FibreChannel (1063 Mb/s) and Gigabit Ethernet (1250 Mb/s)
	Option F9	Adds reference receiver filters FibreChannel (1063 Mb/s) and 2G FibreChannel (2125 Mb/s)
Option F10	Adds reference receiver filters Gigabit Ethernet (1250 Mb/s) and 2G FibreChannel (2125 Mb/s)	
80C08C	Option CR1	Adds 9.95328 Gb/s and 10.3125 Gb/s clock recovery
	Option CR2	Adds 10.3125 Gb/s and 10.51875 Gb/s clock recovery
	Option CR4	Adds continuous clock recovery from 9.8 Gb/s to 12.6 Gb/s
	Option 01	Adds Extinction Ratio calibration
80C10B	Option F1	Adds reference receiver filters OC768/STM256 (39.813 Gb/s), OTU3 G.709 FEC (43.0184 Gb/s), 40GBase-xR1 (41.25 Gb/s), 100GBase-xR4 (25.781 Gb/s), 100GBase-xR4 w/ FEC (27.739 Gb/s) (removes 80 GHz and 30 GHz bandwidths)
80C11	Option CR1	Adds 9.95328 Gb/s clock recovery
	Option CR2	Adds 9.95328 Gb/s and 10.66423 Gb/s clock recovery
	Option CR3	Adds 9.95328 Gb/s and 10.70922 Gb/s clock recovery
	Option CR4	Adds continuous clock recovery from 9.8 Gb/s to 12.6 Gb/s
	Option 01	Adds Extinction Ratio calibration

Module	Option	Description
80C12	Option F1	Adds reference receiver filters 1G FibreChannel (1.063 Gb/s), 2G FibreChannel (2.125 Gb/s), 4G FibreChannel (4.250 Gb/s)
	Option F2	Adds reference receiver filters 2G FibreChannel (2.125 Gb/s), 4G FibreChannel (4.250 Gb/s), 9 GHz optical bandwidth
	Option F3	Adds reference receiver filters 1G FibreChannel (1.0623 Gb/s), 2G FibreChannel (2.125 Gb/s), 9 GHz optical bandwidth
	Option F4	Adds reference receiver filters 2G FibreChannel (2.125 Gb/s), 10GBase-X4 (3.125 Gb/s), 4G FibreChannel (4.250 Gb/s), 10GFC-X4 (3.188 Gb/s)
	Option F5	Adds reference receiver filters 10GBase-X4 (3.125 Gb/s), 4G FibreChannel (4.250 Gb/s), 10GFC-X4 (3.188 Gb/s), 9 GHz optical bandwidth
	Option F6	Adds reference receiver filters 2G FibreChannel (2.125 Gb/s), 10GBase-X4 (3.125 Gb/s), 10GFC-X4 (3.188 Gb/s), 9 GHz optical bandwidth
	Option FC	Adds reference receiver filters 10GBase-X4 (3.125 Gb/s), VSR-5 (3.318Gb/s), 10GFC-X4 (3.188 Gb/s), 9 GHz optical bandwidth
	Option 10G	Adds reference receiver filters OC192/STM-64 (9.953 Gb/s), 10GFC (10.518 Gb/s), 10GBase-W (9.953 Gb/s), 10GBase-R (10.31 Gb/s), G.975 FEC (10.66 Gb/s), G.709 FEC (10.709 Gb/s), 10GBE FEC (11.10 Gb/s), 10GFC FEC (11.317 Gb/s), 10 GHz optical bandwidth
	Option 01	Adds Extinction Ratio calibration
All modules	Option C3	Three years of calibration service
All modules	Option C5	Five years of calibration service
All modules	Option D1	Calibration data report
All modules	Option D3	Three years of calibration data reports (requires Opt. C3)
All modules	Option D5	Five years of calibration data reports (requires Opt. C5)
All modules	Option R3	Extended repair warranty to three years
All modules	Option R5	Extended repair warranty to five years.

Standard Accessories The following accessories are shipped with the module:

Table 6: Standard accessories

Item	Part number
Certificate of Traceable Calibration for product at initial shipment	Not orderable
Fiber cleaning kit	020-2494-xx
SMA male 50 Ω termination (installed, one per clock recovery output connector)	015-1022-xx

Optional Accessories The following accessories are orderable for use with the sampling module at the time this manual originally published. Consult a current Tektronix catalog for additions, changes, and details:

Table 7: Optional accessories

Item	Part number
D4/PC Universal Optical Input (UCI) adapter	119-4514-xx
Biconic UCI adapter	119-4515-xx
FC/PC UCI adapter, APC-108	119-5115-xx
SMA 2.5 UCI adapter	119-4517-xx
SC/PC UCI adapter	119-5116-xx
DIN/PC UCI adapter	119-4546-xx
DIAMOND 2.5 UCI adapter	119-4556-xx
SMA UCI adapter	119-4557-xx
DIAMOND 3.5 UCI adapter	119-4558-xx
ST/PC UCI adapter	119-4513-xx
3.5 male to 3.5 female SMA	015-0552-xx
Slip-on SMA connector	015-0553-xx
CSA8000 & TDS8000 Series Service Manual	071-0438-xx
DSA8200 Service Manual	071-2049-xx
80C00 Series Optical Sampling Modules User Manual	071-0435-xx

Installation

The optical modules fit in the large slot in the front panel of a compatible instrument, such as the DSA8200. The following figure shows the front panel of a DSA8200 instrument and the locations of the module compartments.

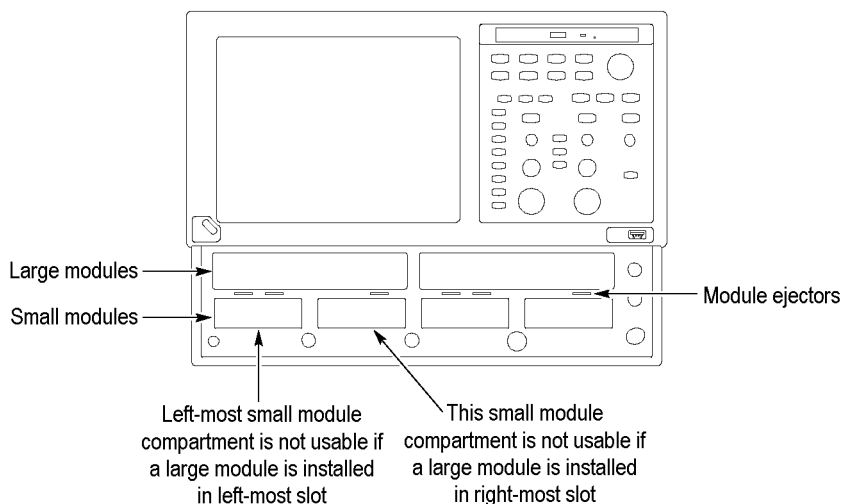


Figure 1: Module compartments

At least one module must be installed in the main instrument to acquire signals.

NOTE. *Installing a large module, in either large compartment, disables some of the small compartment channels. Refer to your main instrument's Online Help about compartment interaction.*

The large compartments support single channel modules, while the small compartments support single or dual channel modules. Eight of the 10 inputs are usable at one time.

Electrostatic Discharge

To prevent electrostatic damage to the main instrument and optical modules, follow the precautions described in this manual and the manuals accompanying your main instrument.

Circuitry in the optical module is very susceptible to damage from electrostatic discharge and from over drive signals. Be sure to only operate the optical module in a static-controlled environment (grounded conductive table top, wrist strap, floor mat, and ionized air blower). Be sure to discharge to ground any electrostatic charge that may be present on electrical cables before attaching the cable to the optical module recovered clock and data outputs.



CAUTION. *The recovered clock and data outputs of the optical module are subject to damage from electrostatic discharge (ESD). To prevent damage from electrostatic discharge, store the optical module with the supplied SMA terminations installed. Store the module in a static-free container, such as the shipping container. Whenever you move the optical module from one instrument to another, use a static-free container to carry the optical module.*

Always use a wrist strap (provided with your instrument) when handling an optical module or making connections. Discharge to ground any electrostatic charge that may be present on cables before attaching the cable to the optical-module.

Module Installation

To install a large module, first power off the instrument using the front-panel On/Standby power switch. Then place the module into a compartment and slowly push it in with firm pressure. Once the module is seated, turn the hold-down screws clockwise to lock the module in place. (See Figure 2.)

NOTE. *To facilitate installation, turn the hold-down screws so that they are completely out (all the way counterclockwise), and then be sure to seat the module completely into its compartment. Doing so will help ensure the retaining ear on each screw rotates into position as you tighten the screws.*



CAUTION. *To prevent damage to the optical module or instrument, never install or remove a module when the front-panel On/Standby power switch is ON (powered-on).*

Once you have secured the module, you can turn on the instrument.

NOTE. *When removing a module, after turning the hold-down screws counterclockwise, use the module ejectors on the main instrument to eject the module.*

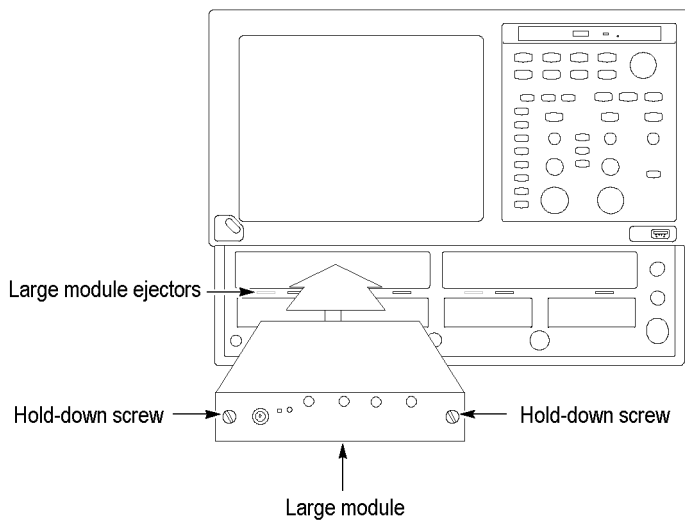


Figure 2: Installing a large module

NOTE. After first installing a sampling module(s) or after moving a sampling module from one compartment to another, you should run Compensation from the Utilities menu to ensure the instrument meets its specifications. You must run a compensation if an extender is installed, changed, or removed from a module. For instructions on running a compensation, see *Optimizing Measurement Accuracy*. (See page 20.)

After running Compensation, you must save the new values to retain them, otherwise they will be lost when turning the instrument power off.

Operating Basics

This section describes the front panel, connecting to the circuit under test, system interaction with the main instrument, and the programmer interface.

Usage

Handle your optical module carefully at all times.



CAUTION. *To avoid damaging your optical module, take the following precautions:*

Do not drop your module since damage and misalignment of the photodiode optical assembly can result. Store the module in a secure location when not in use.

Replace the protective cap on the input connector when the module is not in use.

*To prevent loss of optical power or damage to the optical connectors, keep the connectors clean at all times. Also insure that all connectors and jumpers attached to the inputs are clean prior to insertion. (See page 21, *Cleaning Optical Connectors*.)*

Connecting Optical Signals

Take care to preserve the integrity of the connectors by keeping them free of contamination. For cleaning information, see *Cleaning Optical Connectors*. (See page 21.)

The input of the 80C02, 80C10B, 80C11, and 80C25GBE modules (see note) can couple to single-mode optical fibers with a core diameter/cladding diameter of 9/125 μm . The 80C07B, 80C08C, and 80C12 modules can couple to any single-mode dimension or multimode dimension not exceeding a core diameter/cladding diameter of 62.5/125 μm . Alternate types can be coupled by use of UCI (universal connector interface) series adapters. Refer to a current Tektronix catalog for details.

NOTE. *The 80C10B and 80C25GBE have two separate optical inputs. The user must choose the correct one to use depending on 1310 nm or 1550 nm operation.*

Attach the fiber optic cable with a suitable connector or a UCI Interface adapter to the optical input receptacle as follows. Figure 3 illustrates the proper use of a UCI adapter.

1. Firmly press the cable connector or adapter into the interface ferrule until it reaches the stop.
2. Line up the key with the slot in the UCI adapter before inserting.

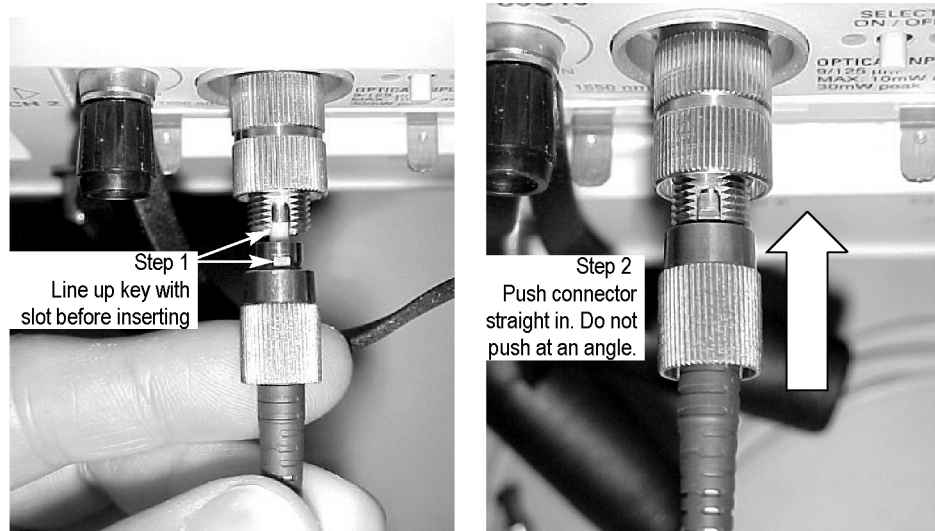


Figure 3: Connecting optical cables correctly



CAUTION. Do not insert the connector into the UCI adapter at an angle. Do not insert the connector and then rotate to line up the key with the slot. Either action may damage the UCI adapter.

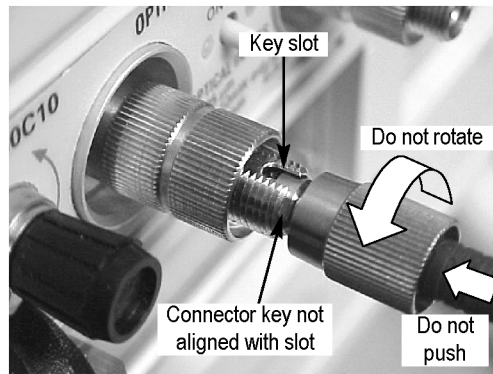


Figure 4: Incorrectly connecting optical cables

3. Firmly tighten the cable connector or the adapter shell. Tighten with finger pressure only.
4. To remove, unscrew the cable connector or adapter shell.

Attenuating Optical Signals

To keep the optical input power to an appropriate level, it may be necessary to attenuate the optical signal.



CAUTION. To avoid damaging the optical input of the module, attenuate to the Absolute Maximum Nondestructive Optical Input (peak) specifications. To maintain the levels within performance range and to avoid clipping, attenuate optical signals as indicated in the following table.

Table 8: Optimum optical signal levels

Module	Average	Peak
80C02	5 mW	10 mW
80C07B	5 mW	10 mW
80C08C	1 mW	10 mW
80C10B	20 mW	60 mW
80C11	5 mW	10 mW
80C12	1 mW	10 mW
80C25GBE	20 mW	60 mW

NOTE. The 80C07B module can have a somewhat deteriorated response for signals larger than 200 $\mu\text{Wp-p}$ (1310 nm and 1550 nm) and 400 mWp-p (780 nm and 850 nm). The 80C08C and 80C12 modules also can have a somewhat deteriorated response for signals larger than 500 $\mu\text{Wp-p}$ (1310 nm and 1550 nm) and 800 mWp-p (850 nm).

NOTE. Optical sampling modules may have dynamic ranges exceeded without obvious visual indication onscreen because the overloaded signal output of the photodetector may still be within the dynamic range of the internal electrical sampler.

System Interaction

Your optical module is a part of a larger instrument system. Most optical module functions are controlled automatically by the main instrument. These include such things as vertical scaling and horizontal sampling rate. You do not directly control these parameters; they are controlled for you as you perform tasks on the main instrument. The parameters that you control from the optical module front panel are explained in the *Front Panel Controls* section.

An additional optical module function that you control from the main instrument is external channel attenuation. External Attenuation lets you enter a number representing any external attenuation you have added to a channel.

Front Panel Controls

Typical optical module front panels are shown in the following figure. (See Figure 5.)

Channel Selection

Each channel has a SELECT channel button and an amber channel light. The button operates as follows:

- If the amber channel light is on, the channel is acquiring a waveform.
- If you press the button and the channel is not currently being acquired (for any channel or math waveform), then the instrument activates (turns on) the channel.
- If you press the button and the channel is currently active as a channel waveform, then the instrument selects the channel waveform.
- If the channel waveform is already selected when you press the channel button, the instrument turns the channel off.

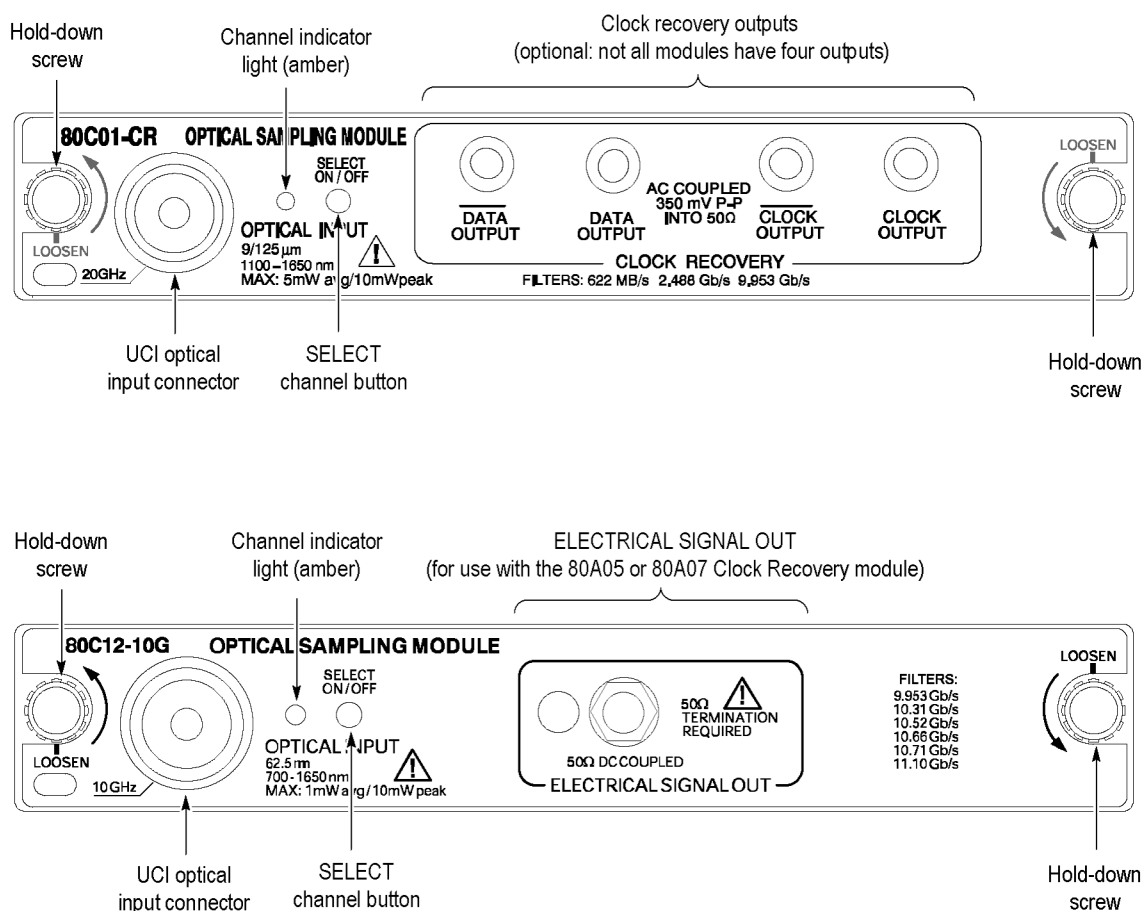


Figure 5: Typical Optical module front panels, 80C01-CR and 80C12-10G shown

Optical Input Connector

The optical input connector uses a universal connector interface (UCI) that allows use of many standard fiber-optic female connector styles. Some of the standard UCI interfaces supported are FC, ST, SC, and DIN. (Refer to a current Tektronix catalog for details.)

Outputs

Most optical modules provide optional clock and data-recovery circuitry, providing clock and data outputs; the recovered clock is internally routed to the main-instrument trigger circuit. The circuitry also provides front-panel output of normal and complemented clock, and on some modules, normal and complemented data.

The 80C12 module provides an electrical signal output. For clock recovery purposes, this signal must be routed to the input of an 80A05 or 80A07 Electrical Clock Recovery module within the same mainframe.

The following table provides a list of current modules and available outputs.

NOTE. Use 50 Ω terminations, provided with your optical module, on all unused outputs.

Table 9: Clock recovery outputs

Modules	Front panel outputs
80C02-CR	DATA, CLOCK, 1/16 CLOCK
80C07B-CR1	DATA, $\overline{\text{DATA}}$, CLOCK, $\overline{\text{CLOCK}}$
80C08C-CR1	CLOCK, 1/16 CLOCK
80C08C-CR2	CLOCK, 1/16 CLOCK
80C08C-CR4	CLOCK, 1/16 CLOCK
80C11-CR1	DATA, CLOCK, 1/16 CLOCK
80C11-CR2	CLOCK, 1/16 CLOCK
80C11-CR3	CLOCK, 1/16 CLOCK
80C11-CR4	CLOCK, 1/16 CLOCK
80C12	ELECTRICAL SIGNAL OUT (for use with the 80A05 or 80A07 module)

You can disable the internal recovered clock from being used as the main instrument trigger by selecting external or internal triggering; select the recovered clock rate without actually selecting recovered clock as the trigger condition in order to activate the front-panel clock recovery signals.

Hold-Down Screws

Hold-down screws secure the module to the main instrument. Once the hold-down screws are loosened, use the eject levers to remove the module from a powered-down main instrument. Indicators on the hold-down screws point in the direction that the latch is pointing.

Commands From the Main Instrument Front Panel

The Vertical Setup dialog box lets you toggle between the basic and optical module controls. The optical and basic controls are shown in the following figure.

You first select the channel you want to set in the Waveform section of the dialog box. Then you select the Setup Wavelength, Filter, Bandwidth, or Compensate controls in the dialog box to change those settings or to initiate a compensation. Optical modules with the clock recovery option also have source and rate controls in the Trigger dialog box.

Detailed information on these dialog boxes can be found in the Online Help for your main instrument.

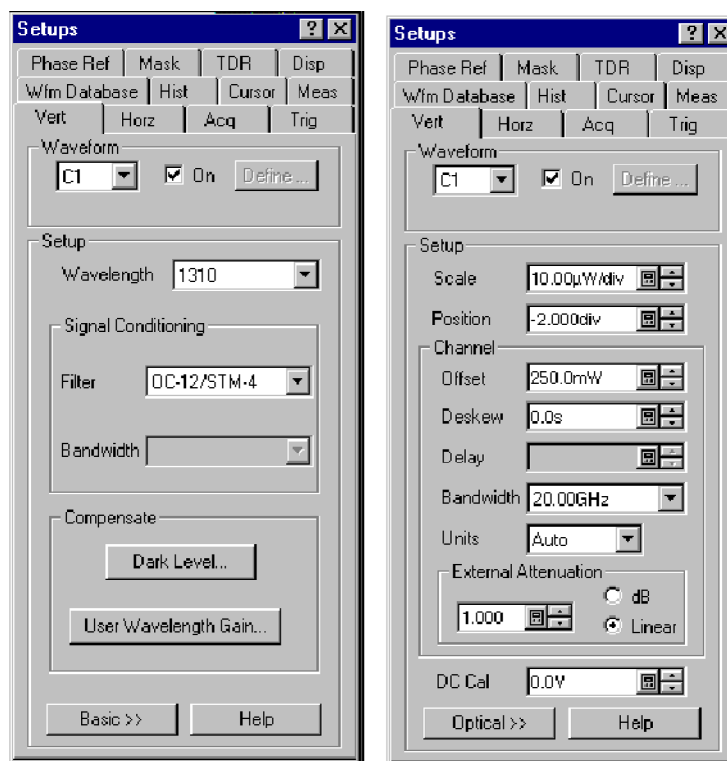


Figure 6: System Vertical menu

Programmer Interface Commands

The remote programming commands for all sampling modules are documented in the *Programmer Guide* accessible from the instrument Help menu.

User Adjustments

All optical module setups, parameters, and adjustments are controlled by the main instrument. To save, recall, or change any module settings, use the main-instrument menus or front-panel controls. Consult the *Online Help* for your main instrument.

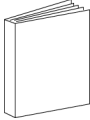

Optimizing Measurement Accuracy

Measurement accuracy of optical modules is increased (or maintained) by performing the following procedures:

- Vertical Compensation
- Cleaning the Optical Connectors
- Dark-Level and User Wavelength Gain Compensations

Perform Vertical Compensation

Performing a vertical compensation will maximize the accuracy of the automatic measurements you take. This procedure uses internal routines to optimize the vertical offset, gain, and linearity.

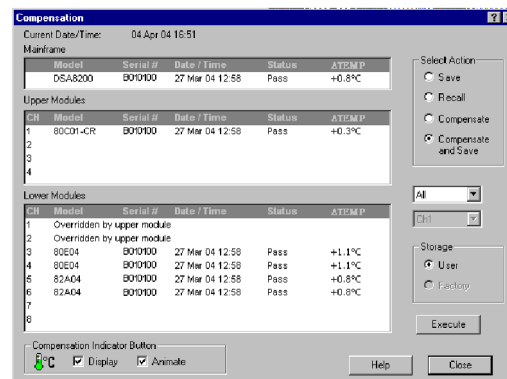
Overview	To perform optical compensations	Control elements and resources
Prerequisites	<ol style="list-style-type: none"> 1. The instrument must have the optical sampling module(s) to be compensated in place. The acquisition system should be set to run continuously. 2. Dust covers must be in place on all optical module channels (or otherwise eliminate the optical input). 3. Power on the instrument and allow a 20 minute warm-up before doing this procedure 	 <p>See the instrument user documentation and online help for details on operating the instrument controls.</p>
Access the compensation routines	<ol style="list-style-type: none"> 4. From the application menu bar, click Utilities, and then click Compensation. 	

Overview

To perform optical compensations

5. In the Compensation dialog box, the main instrument (mainframe) and sampling modules are listed. The temperature change from the last compensation is also listed.
6. Wait until the Status for all items you wish to compensate changes from **Warm Up** to **Pass**, **Fail**, or **Comp Req'd**.
7. Under Select Action, click the **Compensate** option button.
8. From the top pulldown list, choose **All** (default selection) to select the main instrument and all its modules as targets to compensate.
9. Click the **Execute** button to begin the compensation.
10. Follow the instructions to disconnect inputs and install terminations that will appear on screen; be sure to follow static precautions when following these instructions.

Control elements and resources



Verify that the compensation routines pass

11. The compensation may take several minutes to complete. Verify that **Pass** appears as **Status** for the main instrument and for all sampling modules listed in the Compensation dialog box when compensation completes.
12. If instead **Fail** appears as **Status**, rerun the compensation. If **Fail** status continues after rerunning compensation and you have allowed warm up to occur, the module or main instrument may need service.
13. Click the **Save** option button under Select Action. Click the **Execute** button to save the compensation.
 - If you don't save the new compensation values, they will be lost when the instrument is powered off.

Cleaning Optical Connectors

Small dust particles and oils can easily contaminate optical connectors and reduce or block the signal. Take care to preserve the integrity of the connectors by keeping them free of contamination.



CAUTION. To prevent loss of optical power or damage to the optical connectors, keep the connectors clean at all times.

To reduce the need for cleaning, immediately replace protective caps on the optical connectors when not in use.

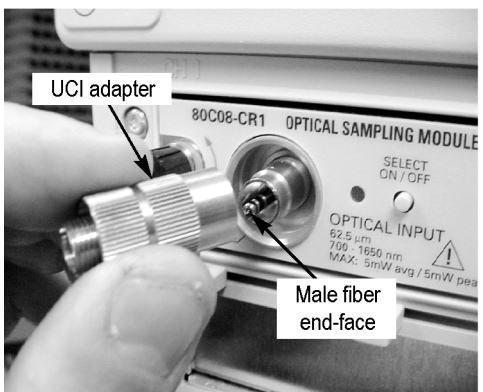
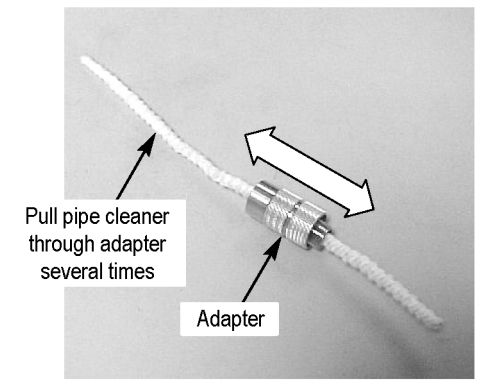

Use the following items to clean optical connectors:

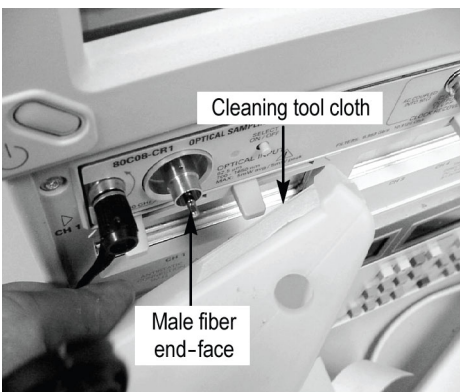

- Dry, clean, and dust-free compressed air
- Fiber cleaning cassette and/or tape dispenser cleaner
- Pipe cleaner



CAUTION. Clean your connecting fiber (ferrule endface) with a dry cloth tape (casseted or in a dispenser) cleaner. Both ferrule endfaces can be cleaned in this way.

For safe and effective cleaning of the optical male fiber end-face exposed after removing the UCI adapter, Tektronix recommends the following method and tools.

Overview	To clean the optical connectors	Related information
Supplies required	<ol style="list-style-type: none"> 1. One compressed air can, such as Tektronix part number 118-1068-01. One FIS cassette cleaner, (such as FI-6270) or one FIS tape dispenser cleaner (such as FI-7111). 	<p>Cleaning kits for optical connectors (such as the Tektronix Optical Connector Cleaner part number 020-2494-xx) are available from a number of suppliers.</p>
Remove UCI adapter	<ol style="list-style-type: none"> 2. Unscrew the UCI adapter and remove it. This exposes the male fiber end-face behind the UCI connector. 	
Clean UCI adapter	<ol style="list-style-type: none"> 3. Clean contaminates from the inside wall of the hollow female-to-female ferrule alignment tube inside the UCI adapter. <ul style="list-style-type: none"> ■ Use the compressed air can to clean the female input of the UCI adapter end-to-end. ■ Pull the pipe cleaner through the UCI adapter. 	
	 <p>CAUTION. Do not blow compressed air into the female input of the UCI adapter when it is installed on the module.</p>	

Overview	To clean the optical connectors	Related information
Clean fiber input	<ol style="list-style-type: none"> 4. Advance the fiber cleaning cassette or tape-dispenser cleaner to expose an unused clean section of the lint-free, dry, cleaning surface. 5. Lightly drag the clean, dry, surface of the cleaning tool cloth against the male end-face of the fiber input for a short distance (a centimeter or two). 6. Replace the UCI adapter back onto the cleaned fiber end-face. 	
Dust cap	<ol style="list-style-type: none"> 7. When the module does not have a fiber attached to its input(s) ensure the black dust-cap is in place to prevent airborne contaminants from lodging in the female optical input. 	
Clean attaching devices	<ol style="list-style-type: none"> 8. Clean any male fiber end-face input fiber or device that will be attached to the UCI input. 	<p>Use a similar cleaning method to clean the fiber end-face input fiber or device that will be attached.</p>

Perform Dark-Level and User Wavelength Gain Compensations

Performing a dark-level calibration will maximize the accuracy of the extinction ratio and other optical automatic measurements you take. Performing a User Wavelength Gain compensation will optimize an optical channel for your custom input signal. Use the following procedure to perform either compensation; this procedure applies only to optical modules.

NOTE. *These procedures compensate the selected module and the its current bandwidth and filter selection. The compensation values are not saved when powering off the instrument.*

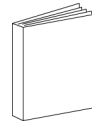
Overview

To perform optical compensations

Control elements and resources

Prerequisites

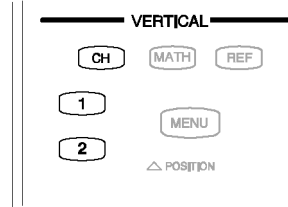
1. The instrument must have the optical sampling module(s) to be dark-level calibrated in place. The acquisition system should be set to run continuously.



See the instrument user documentation and online help for details on operating the instrument controls.

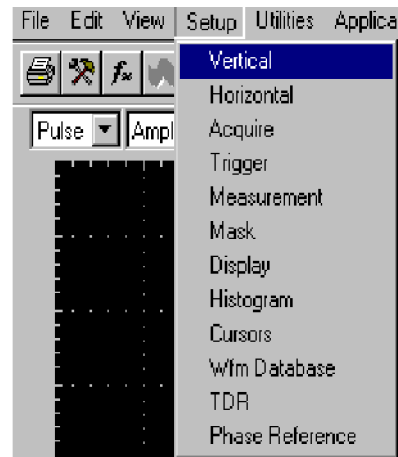
Select the waveform

2. Use the Vertical buttons to select the channel to be compensated.



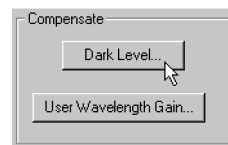
Access the dark-level compensation

3. From the application menu bar, click **Setup**, and then click **Vertical**.



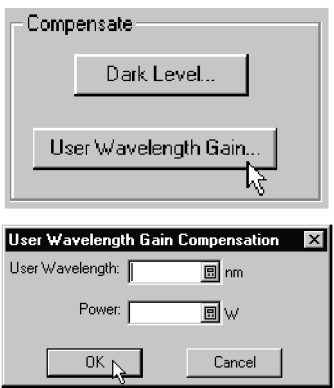
Run the dark-level compensation

4. In Vert Setup dialog box, click the **Dark Level** button under Compensation. Follow the instructions on screen.
5. Repeat steps 2 and 4 for any additional optical channels that you want to compensate.



If any of the following settings or conditions change after performing a dark level compensation, perform another compensation to maintain the specified accuracy.

- Trigger rate setting
- Vertical offset setting
- Filter or bandwidth setting
- Ambient temperature change of more than 1 °C
- ELECTRICAL SIGNAL OUT front panel connection change (80C12)

Overview	To perform optical compensations	Control elements and resources
Run the user wavelength gain compensation	<p>If you want, you can compensate an optical channel for a custom input signal:</p> <ol style="list-style-type: none"> 6. In Vert Setup dialog box, click the User Wavelength Gain button under Compensation. Follow the instructions on screen. <ul style="list-style-type: none"> ■ In the User Wavelength Gain Compensation dialog box, set the wavelength and power of the signal to be applied to the channel. 7. You must connect an optical signal to the module input with a precisely known amount of optical power. An independently-calibrated average optical power meter is used to measure this power precisely. Then signal is connected to the 80C00 with the same fiber cables. 8. Press the OK button to execute the compensation. 9. Repeat steps 2, 6, and 7 for any additional optical channels that you want to compensate. 	

NOTE. The 80C10 has two separate optical inputs each optimized for different wavelength regions (1310 nm or 1550 nm). Therefore, it supports two different user wavelength gain compensation calibrations, one for each input.

Cleaning

Exterior The case of the module keeps dust out and should not be opened. Cleaning the exterior of the module is usually confined to the front panel. If you desire to clean the case, remove the module from the main instrument but first read the entire *Installation* procedure for proper handling of the module. (See page 9.)



WARNING. To prevent injury, power down the instrument and disconnect it from line voltage before performing any cleaning.

Clean the exterior surfaces of the module with a dry lint-free cloth or a soft-bristle brush. If any dirt remains, use a damp cloth or swab dipped in a 75% isopropyl alcohol solution. Use a swab to clean narrow spaces around controls and connectors. Do not allow moisture inside the module. Do not use abrasive compounds on any part of the chassis that may damage the chassis.



CAUTION. To prevent damage, avoid the use of chemical cleaning agents which might damage the plastics used in this instrument. Use a 75% isopropyl alcohol solution as a cleaner and rinse with deionized water. Use only deionized water when cleaning the menu buttons or front-panel buttons. Before using any other type of cleaner, consult your Tektronix Service Center or representative.

Do not open the case of the module. There are no user serviceable components and cleaning the interior is not required.

Optical Connectors The procedure for cleaning the optical connectors is given in the *Optimizing Measurement Accuracy* section. (See page 21, *Cleaning Optical Connectors*.)

Reference

This section describes how to select the optical module wavelength, how to enable clock recovery, and explains optical bandwidth.

Wavelength, Filter, and Bandwidth Selection

To select the optical wavelength, use the Vertical Setups menu. (See Figure 6 on page 19.)

First select the channel in the Waveform section of the menu. Then select the Wavelength that matches your system from the Setup Wavelength drop down box.

Use the Signal Conditioning boxes to select the filter and bandwidth appropriate for your optical standard.

For more information, consult the *Online Help* for your main instrument.

Table 10: Wavelength, Filter, and Bandwidth selections

Module	Wavelength selections	Filter	Bandwidth
80C02	1310 nm	None (select a bandwidth)	30 GHz
	1550 nm	OC-192/STM-64 (9.953 Gb/s)	20 GHz
	User		12.5 GHz
80C07B	780 nm	None	2.5 GHz
	850 nm	Standard:	
	1310 nm	OC-48 / STM-16	
	1550 nm	2 Gigabit Ethernet (ENET2500 / 2GBE)	
	User	Infiniband	
	Optional:		
		OC-3 / STM-1	
		OC-12 / STM-4	
		FibreChannel (FC1063 / FC)	
		Gigabit Ethernet (ENET1250 / GBE)	
		2G FibreChannel (FC2125 / 2FC)	
80C08C	780 nm	None (select a bandwidth)	10 GHz
	850 nm	OC-192/STM-64 (9.953 Gb/s)	
	1310 nm	10GBASE-W (9.953 Gb/s)	
	1550 nm	10GBASE-R (10.31 Gb/s)	
	User	10GFC (10.518 Gb/s)	
		G.975 FEC (10.66 Gb/s)	
	G.709 FEC (10.709 Gb/s)		
	10GbE FEC (11.10 Gb/s)		
	11.317 Gb/s (10GFC FEC)		
80C10	1310 nm	None (select a bandwidth)	30 GHz
	1550 nm	OC-768/STM-256 (39.813 Gb/s)	65 GHz
	User	G.709 FEC (43.018 Gb/s)	

Table 10: Wavelength, Filter, and Bandwidth selections (cont.)

Module	Wavelength selections	Filter	Bandwidth
80C10B	1310 nm	None (select a bandwidth)	30 GHz
	1550 nm User	Standard: OC-768/STM-256 (39.813 Gb/s) G.709 FEC (43.018 Gb/s) 40GBase-R1 (41.25 Gb/s) Optional: 100GBase-xR4 (25.781 Gb/s) 100Gbase-xR4 FEC (27.739 Gb/s)	65 GHz 80 GHz
80C11	1310 nm	None (select a bandwidth)	28 GHz
	1550 nm User	OC-192/STM-64 (9.953 Gb/s) 10GBASE-W (9.953 Gb/s) 10GBASE-R (10.31 Gb/s) 10GFC (10.518 Gb/s) G.975 FEC (10.66 Gb/s) G.709 FEC (10.709 Gb/s) 10GbE FEC (11.10 Gb/s) 10GFC FEC (11.317 Gb/s)	
80C12	850 nm	None (select a bandwidth)	9 GHz
	1310 nm 1550 nm	1G FibreChannel (1.0623 Gb/s) 2G FibreChannel (2.125 Gb/s) 10GBase-X4 (3.125 Gb/s) 10GFC-X4 (3.188 Gb/s) VSR-5 (3.318Gb/s) 4G FibreChannel (4.250 Gb/s) OC192/STM-64 (9.953 Gb/s) 10GFC (10.518 Gb/s) 10GBase-W (9.953 Gb/s) 10GBase-R (10.31 Gb/s) 10GBE FEC (11.10 Gb/s) G.975 FEC (10.66 Gb/s) G.709 FEC (10.709 Gb/s) 10GFC FEC (11.317 Gb/s)	10 GHz with option 10G
80C25GBE	1310 nm	None (select a bandwidth)	65 GHz
	1550 nm User	100GBase-xR4 (25.781 Gb/s) 100Gbase-xR4 FEC (27.739 Gb/s)	

Clock and Data Recovery

Clock and Data recovery is available on most modules as Options CR, CR1, CR2, CR3, or CR4. The 80C12 module comes standard with an electrical signal output that, when routed to an 80A05 or 80A07 Electrical Clock Recovery module, provides Clock recovery. The 80A05 must be installed in the same mainframe. A list of all available optical modules and the clock recovery available for each module is provided. (See Table 9 on page 18.)

- **DATA and $\overline{\text{DATA}}$ (recovered data).** These outputs provide a 50 Ω , AC-coupled, \sim ECL/2 level signal from the optical module data signal. These signals are digitally buffered and retimed to be synchronous with the serial recovered clock.
- **CLOCK and $\overline{\text{CLOCK}}$ (recovered clock).** These outputs are clock signals synchronous with the incoming data signal.
- **1/16 CLOCK (recovered clock).** This output provides the clock signal at 1/16th the rate.

Clock recovery options CR, CR1, CR2, and CR3 provide various predefined output rates (depending on the optical module model and the CR option). Clock recovery option CR4 provides both predefined selections and a continuous-rate selection. The continuous rate depends on the user entering the bit rate into the Trigger Setup dialog box of the main instrument with an accuracy better than 1000 ppm. A table summarizes the clock recovery options for all modules. (See Table 14 on page 57.)

NOTE. *If clock and data recovery are enabled and no signal (or not the appropriate signal) is applied to the front panel, the recovered clock and data may free run.*

NOTE. *The recovered clock is simultaneously made available internally to the main instrument for use as the trigger; it is not necessary to attach a cable from the clock or 1/16 clock to the external trigger input. Simply select the recovered clock for triggering from the trigger menu.*

The 80C12 module uses the 80A05 or 80A07 Electrical Clock Recovery module for Clock and Data recovery. Refer to the 80A05 or 80A07 module user documentation for triggering information.

Optical Bandwidth

Traditionally bandwidth is defined as the frequency at which the power out is one half the power out at a frequency near DC. In the voltage domain the power dissipated into a resistive load (such as a 50 Ω termination of a sampler) is the V_{RMS}^2/R where V_{RMS} is the RMS of the voltage swing seen at the resistive load, and R is the resistance value. A logarithmic scale using decibels is typically used to describe a system's frequency dependent response. A value expressed in terms of a decibel relative to a reference is defined as:

$$dB = 10 \log \left(\frac{\text{value}}{\text{reference}} \right)$$

For electrical bandwidths the reference of a system is commonly the response of the system to a sinusoidal frequency at or near DC. The point at which the system

response (power is the common parameter that is referred to in many systems) is one half would therefore be:

$$dB = 10 \log \left(\frac{0.5}{\text{response at DC}} \right) = -3 \text{ dB}$$

In terms of frequency, voltage, and resistance the bandwidth is expressed as:

$$-3 \text{ dB} = 10 \log \left(\frac{V(f)^2}{R} \div \frac{V(DC)^2}{R} \right)$$

where V(f) is the RMS of the voltage swing response at the bandwidth frequency and V(DC) is the RMS voltage swing response at a frequency approaching DC. Further math yields $V(f) = 0.707 V(DC)$.

The expression is simplified by cancelling the R and moving the squared term inside the log expression to a multiple outside the log expression:

$$10 \log \left(\frac{V(f)^2}{R} \div \frac{V(DC)^2}{R} \right) = 2 \times 10 \log \left(\frac{V(f)}{V(DC)} \right) = 20 \log \left(\frac{V(f)}{V(DC)} \right)$$

In the DSA8200, CSA8000 and TDS8000 Series instruments, the vertical units displayed for an optical module are not in volts, but in watts, which are units of power. The optical-to-electrical converter inside the module outputs a voltage whose amplitude is linearly dependent on the incoming optical power; in this condition the voltage applied at the electrical sampler already represents optical power in its linear form (as opposed to having to square the voltage and divide by R). For the optical sampling modules then, the bandwidth where the displayed optical power is one half that approaching DC is:

$$dB = 10 \log \left(\frac{.05}{\text{response at DC}} \right) = -3 \text{ dB}$$

The V(f) is the frequency at which the vertical swing is one half (0.5) the V(DC) not 0.707. The optical bandwidth therefore corresponds to the traditional electrical bandwidth of -6 dB. During testing of optical modules by impulse testing, the resulting impulse waveform is converted to frequency by Fourier transform and the bandwidth is defined as $-3 \text{ dB} = 10 \log(\text{vertical swing at frequency} / \text{vertical swing at DC})$. During reference receiver curve calculation, however, the definition is changed to match the industry standard definition which assumes electrical bandwidths are $-3 \text{ dB} = 20 \log(\text{vertical swing at frequency} / \text{vertical swing at DC})$.

Bandwidth for Unfiltered Frequency Settings	The curve calculation of frequency response for the unfiltered frequency settings (2 GHz, 2.5 GHz, 12.5 GHz, 20 GHz, 30 GHz, 40 GHz, 50 GHz, 65 GHz, and 80 GHz) uses the definition for dB and bandwidth where $-3 \text{ dB} = 10 \log(\text{vertical swing at frequency} / \text{vertical swing at DC})$; that is, the optical bandwidth.
Bandwidth for Reference Receiver Settings	The curve calculation of frequency response for reference receiver settings (FC, GbE, and OC/STM standards) uses the definition of dB and bandwidth that matches the industry standard which assumes electrical bandwidths where $-3 \text{ dB} = 20 \log(\text{vertical swing at frequency} / \text{vertical swing at DC})$.

Extinction Ratio Calibration

Option 01 (Extinction Ratio Calibration) is available for certain modules (80C02, 80C08C, 80C11, and 80C12). Modules with option 01 have been specially calibrated to a laboratory standard, providing improved NRZ (non-return-to-zero) extinction ratio measurements (in dB).

The DSA8200, CSA8000, and TDS8000 Series instruments provide both an NRZ Extinction Ratio (dB) measurement and an NRZ Extinction Ratio Calibrated (dB) measurement.

When performing extinction ratio measurements, use of the calibrated measurement is recommended (instead of the standard ER) for improved accuracy and module-to-module repeatability. This improvement only applies to balanced NRZ eye diagrams.

To obtain accurate results, it is recommended that an NRZ Eye Autoset followed by a Dark Level Compensation is performed prior to an Extinction Ratio measurement. Please note the conditions under which Dark Level Compensation remains valid. (See page 23.)

Specifications

This section contains specifications for the 80C00 Series Optical Modules. All specifications are guaranteed unless noted as "typical." Typical specifications are provided for your convenience but are not guaranteed. Except for limits noted "typical," specifications that are marked with the n symbol are checked in the *DSA8200 Specifications and Performance Verification* manual.

All specifications apply to all 80C00 Series Optical Modules listed in unless noted otherwise. To meet specifications, three conditions must first be met:

- The instrument must have been calibrated/adjusted at an ambient temperature between +20 °C and +30 °C.
- The instrument must have been operating continuously for 20 minutes within the operating temperature range specified.
- Vertical compensation must have been performed with the module installed in the same compartment used when the compensation was performed. Ambient temperature must be within ± 2 °C of the compensation temperature.
- The instrument must be in an environment with temperature, altitude, humidity, and vibration within the operating limits described in these specifications

NOTE. "Sampling Interface" refers to both the electrical sampling module interface and the optical module interface, unless otherwise specified.

Table 11: Optical modules - Descriptions

Name	Characteristics
80C02	Long wavelength 1100 nm - 1650 nm. Unamplified O/E converter with three user-selectable optical bandwidths: 12.5 GHz 20 GHz 30 GHz or one user-selectable reference receiver response: OC-192/STM-64 for 9.953 Gb/s Sonet/SDH standards.

Table 11: Optical modules - Descriptions (cont.)

Name	Characteristics
80C07B	<p>Broad wavelength 700 nm - 1650 nm. Amplified O/E converter with optical bandwidth of 2.5 GHz. The OC-48, 2GBE, INFINIBAND, and 2.5 GHz modes all use a physical path that has OC-48 reference receiver type response. There are eight user-selectable reference receiver responses:</p> <ul style="list-style-type: none"> OC-3 / STM-1 OC-12 / STM-4 OC-48 / STM-16 ENET1250 / GBE ENET2500 / 2GBE INFINIBAND FC1063 / FC FC2125 / 2FC
80C08C	<p>Broad wavelength 700 nm - 1650 nm. Amplified O/E converter with maximum optical bandwidth (in combination with the internal electrical sampler) of (greater than) 9.5 GHz. There are six user-selectable reference receiver responses:</p> <ul style="list-style-type: none"> 10GBASE-W for 9.95328 Gb/s 10 Gb/s Ethernet standard 10GBASE-R for 10.3125 Gb/s 10 Gb/s Ethernet FEC standard 10GBE FEC for 11.0957 Gb/s 10GFC FEC for 11.317 Gb/s 10GFC for 10.51875 Gb/s 10 Gb/s FibreChannel standard OC-192/STM-64 for 9.953 Gb/s Sonet/SDH standards <p>or two data filters:</p> <ul style="list-style-type: none"> G.975 FEC 10.66423 Gb/s G.709 FEC 10.709225 Gb/s
80C10	<p>Long wavelength 1310 nm and 1550 nm. Unamplified O/E converter with two user-selectable optical bandwidths:</p> <ul style="list-style-type: none"> 30 GHz 65 GHz <p>or two user-selectable reference receiver responses:</p> <ul style="list-style-type: none"> OC-768/STM-256 for 39.813 Gb/s Sonet/SDH standards 43.018 Gb/s ITU-T Recommendation G.709 standard
80C10B	<p>Long wavelength 1310 nm and 1550 nm. Unamplified O/E converter with three user-selectable optical bandwidths:</p> <ul style="list-style-type: none"> 30 GHz 65 GHz 80 GHz <p>or three user-selectable reference receiver responses:</p> <ul style="list-style-type: none"> OC-768/STM-256 for 39.813 Gb/s Sonet/SDH standards 43.018 Gb/s ITU-T Recommendation G.709 standard 40GBase-xR1 41.25 Gb/s <p>Option F1 includes the following additional reference receiver filter rates:</p> <ul style="list-style-type: none"> 100GBase-xR4 25.781 Gb/s 100Gbase-xR4 FEC 27.739 Gb/s

Table 11: Optical modules - Descriptions (cont.)

Name	Characteristics
80C11	<p>Long wavelength 1100 nm - 1650 nm. Unamplified O/E converter with two user-selectable optical bandwidths:</p> <ul style="list-style-type: none"> 20 GHz 30 GHz <p>or with six user-selectable reference receiver responses:</p> <ul style="list-style-type: none"> OC-192/STM-64 for 9.953 Gb/s Sonet/SDH standards 10GBase-W for 10 Gb Ethernet 9.95338 Gb/s 10GBase-R 10.3125 Gb/s 10GBE FEC 11.0957 Gb/s 10GFC FEC for 11.317 Gb/s 10GFC for 10G Fibre Channel 10.51875 Gb/s <p>or two data filters:</p> <ul style="list-style-type: none"> G.975 FEC 10.66423 Gb/s G.709 FEC 10.709225 Gb/s
80C12	<p>Broad wavelength 700 nm - 1650 nm. Amplified O/E converter with maximum optical bandwidth (in combination with the internal electrical sampler) of (g than) 8.5 GHz (> 9.5 GHz in Option 10G).</p> <p>A variety of filter options are available that support 2 to 4 filters from the following list:</p> <ul style="list-style-type: none"> FC1063 for 1.0623 Gb/s FibreChannel FC2125 for 2.125 Gb/s FibreChannel 10GBase-X4 for 3.125 Gb/s 10GFC-X4 for 3.188 Gb/s VSR-5 for 3.318 Gb/s FC4250 for 4.25 Gb/s Fibre Channel <p>Some filter options support a filterless full-bandwidth setting (9 GHz) in place of one hardware filter.</p> <p>Option 10G provides the following reference receiver filter rates:</p> <ul style="list-style-type: none"> SONET/SDH OC-192/STM-64 10GBase-W, 10 Gb Ethernet (9.95338 Gb/s) 10GBase-R (10.3125 Gb/s) 10G Fibre Channel (10.51875 Gb/s) G.975 FEC (10.66 Gb/s) G.709 FEC (10.71 Gb/s) 10GBE FEC (11.0957 Gb/s) 10GFC FEC (11.317 Gb/s) > 9.5 GHz full bandwidth
80C25GBE	<p>Long wavelength 1310 nm and 1550 nm. Unamplified O/E converter with optical bandwidth of 65 GHz. There are two reference receiver filter rates:</p> <ul style="list-style-type: none"> 100GBase-xR4 (25.781 Gb/s) 100Gbase-xR4 FEC (27.739 Gb/s)

Table 12: Optical modules - Acquisition

Name	Characteristics
Number of input channels	1 optical
Internal fiber diameter ¹	
80C02, 80C10, 80C10B, 80C11, 80C25GBE	9 mm/125 µm single mode
80C07B, 80C08C, 80C12	62.5 mm (Corning 62.5/125 CPC6 specs) multimode (compatible with single-mode fiber) cladding: 125 mm, buffer: 900 mm
Fiber connector	Rifocs UCI (universal connector interface) male connector
Optical return loss	
80C02, 80C10, 80C10B, 80C11, 80C25GBE	> 30 dB for single-mode fiber
80C07B, 80C08C, 80C12	> 14 dB for multimode fiber > 24 dB for single-mode fiber
Absolute maximum nondestructive optical input ²	
80C02, 80C07B, 80C11	5 mW average power; 10 mW peak power at wavelength with highest relative responsivity.
80C10, 80C10B, 80C25GBE	20 mW average power; 60 mW power at wavelength with highest relative responsivity.
80C08C, 80C12	1 mW average power; 10 mW peak power for 60 ms at wavelength with highest relative responsivity.
Maximum operating ranges ¹¹	
80C02	0 to 10 mW displayed limits, not including offset.
80C07B	0 to 1 mW displayed limits, not including offset.
80C08C, 80C12	0 to 2 mW displayed limits, not including offset.
80C10B-F1, 80C25GBE	0 to 20 mW displayed limits, not including offset
80C11	5 mW average power; 10mW peak power at wavelength with highest relative responsivity. Optical input powers below non-destruct levels may exceed saturation and compression limits of the particular plug-in.
Effective wavelength range ³ , typical	
80C02, 80C11	1100 nm to 1650 nm
80C07B, 80C08C, 80C12	700 nm to 1650 nm
80C10, 80C10B, 80C25GBE	1550 nm: 1520 nm to 1620 nm 1310 nm: 1290 nm to 1330 nm
Calibrated wavelengths	
80C02, 80C10, 80C10B, 80C11, 80C25GBE	1550nm and 1310nm ± 20nm
80C07B, 80C08C	1550nm, 1310nm, 850nm, and 780nm (all ± 20nm)
80C12	1550nm, 1310nm, and 850nm (all ± 20nm)

Name	Characteristics	
✓ Dark level	<p>To achieve these levels, perform a dark level compensation.</p> <p>If any of the following settings or conditions change, you must perform another dark level compensation:</p> <ul style="list-style-type: none"> Trigger rate setting Vertical offset setting Filter or bandwidth setting Ambient temperature change of more than 1 °C ELECTRICAL SIGNAL OUT front panel connection (80C12) 	
80C02	OC-192/STM-64, 12.5 GHz	< 10 μ W \pm 2%(vertical offset)
	20 GHz, 30 GHz	< 10 μ W \pm 4%(vertical offset)
80C07B	All settings	< 500nW \pm 2%(vertical offset)
80C08C	All settings	< 1.0 μ W \pm 2%(vertical offset)
80C12	All settings	< 1.0 μ W \pm 2%(vertical offset)
80C10, 80C10B, 80C25GBE	1550 nm	\pm [25 μ W + 4% vertical offset]
	1310 nm	\pm [35 μ W + 4% vertical offset]
80C11	OC-192, 10.71 Gb/s, 10.71 Gb/s, 10GBASE-W, 10GBASE-R, 10GBE FEC, 10GFC, 10GFC FEC	< 10 μ W \pm 2%(vertical offset)
	20 GHz, 30 GHz	< 10 μ W \pm 4%(vertical offset)
Main-instrument display vertical scale factors	<i>Maximum</i>	<i>Minimum</i>
80C02, 80C11	1 mW per division	10 μ W per division
80C07B	100 μ W per division	1 μ W per division
80C08C, 80C12	200 μ W per division	2 μ W per division
80C10, 80C10B	3 mW per division	30 μ W per division
80C10B-F1, 80C25GBE	2 mW per division	20 μ W per division
	Full scale vertical on the display of the main instrument is 10 divisions. Maximum full scale and minimum full scale are therefore 10 times the values listed above. Vertical scale is adjustable in a 1-2-5 sequence. Between those settings, the scale can be adjusted in smaller increments.	
Vertical offset range		
80C02, 80C11	\pm 6 mW offset relative to center of waveform display (5 divisions from either top or bottom of waveform display)	
80C10, 80C10B	\pm 15 mW offset relative to center of waveform display (5 divisions from either top or bottom of waveform display)	
80C10B-F1, 80C25GBE	\pm 10 mW offset relative to center of waveform display (5 divisions from either top or bottom of waveform display)	
80C07B	\pm 1 mW offset relative to center of waveform display (5 divisions from either top or bottom of waveform display)	
80C08C, 80C12	\pm 4 mW offset relative to center of waveform display (5 divisions from either top or bottom of waveform display)	

Name	Characteristics	
DC vertical accuracy ⁴ , typical	<i>Setting</i>	<i>Accuracy</i>
80C07B, 80C08C, 80C12	All settings	$\pm 25 \mu\text{W} \pm 2\%$ of [(vertical value) - (vertical offset)]
80C02	12.5 GHz, OC-192/STM-64	$\pm 25 \mu\text{W} \pm 2\%$ of [(vertical value) - (vertical offset)]
	20 GHz	$\pm 25 \mu\text{W} \pm 4\%$ of [(vertical value) - (vertical offset)]
	30 GHz	$\pm 25 \mu\text{W} \pm 6\%$ of [(vertical value) - (vertical offset)]
80C10	30 GHz	$\pm 25 \mu\text{W} \pm 4\%$ of [(vertical value) - (vertical offset)]
	39 Gb/s OC-768/STM-256, 43 Gb/s (G.709), FEC 43.02 Gb/s	$\pm 25 \mu\text{W} \pm 6\%$ of [(vertical value) - (vertical offset)]
	65 GHz setting	$\pm 25 \mu\text{W} \pm 8\%$ of [(vertical value) - (vertical offset)]
80C10B	30 GHz	$\pm 25 \mu\text{W} \pm 4\%$ of [(vertical value) - (vertical offset)]
	39 Gb/s OC-768/STM-256, 43 Gb/s (G.709), FEC 43.02 Gb/s, 40GBase-xR1 41.25 Gb/s	$\pm 25 \mu\text{W} \pm 6\%$ of [(vertical value) - (vertical offset)]
	65 GHz setting	$\pm 25 \mu\text{W} \pm 8\%$ of [(vertical value) - (vertical offset)]
	80 GHz setting	$\pm 25 \mu\text{W} \pm 9\%$ of [(vertical value) - (vertical offset)]
80C10B-F1	39 Gb/s OC-768/STM-256, 43 Gb/s (G.709), FEC 43.02 Gb/s, 41.25 Gb/s 40GBase-xR1	$\pm 25 \mu\text{W} \pm 6\%$ of [(vertical value) - (vertical offset)]
	65 GHz setting	$\pm 25 \mu\text{W} \pm 8\%$ of [(vertical value) - (vertical offset)]
	100GBase-xR4 25.781 Gb/s, 100Gbase-xR4 FEC 27.739 Gb/s	$\pm 25 \mu\text{W} \pm 4\%$ of [(vertical value) - (vertical offset)]
80C25GBE	65 GHz setting	$\pm 25 \mu\text{W} \pm 8\%$ of [(vertical value) - (vertical offset)]
	100GBase-xR4 25.781 Gb/s, 100Gbase-xR4 FEC 27.739 Gb/s	$\pm 25 \mu\text{W} \pm 4\%$ of [(vertical value) - (vertical offset)]
80C11	OC-192, 10.66 Gb/s, 10.71 Gb/s, 10Gbase-W, 10Gbase-R, 10GBE FEC, 10GFC, 10GFC FEC	$\pm 25 \mu\text{W} \pm 2\%$ of [(vertical reading) - (vertical offset)]
	20 GHz	$\pm 25 \mu\text{W} \pm 4\%$ of [(vertical reading) - (vertical offset)]
	30 GHz	$\pm 25 \mu\text{W} \pm 6\%$ of [(vertical reading) - (vertical offset)]

Name	Characteristics	
DC vertical difference accuracy ⁴ , typical	The accuracy of the difference between two cursors in the vertical scale of the same channel.	
	<i>Setting</i>	<i>Accuracy</i>
80C02	12.5 GHz, OC-192/STM-64	± 2% of [difference reading]
	20 GHz	± 4% of [difference reading]
	30 GHz	± 6% of [difference reading]
80C07B	All settings	± 2% of [difference reading]
80C08C, 80C12	All settings	± 2% of [difference reading]
80C10	30 GHz	± 4% of [difference reading]
	39 Gb/s, OC-768/STM-256, 43 Gb/s, FEC 43.02	± 6% of [difference reading]
	65 GHz	± 8% of [difference reading]
80C10B	30 GHz	± 4% of [difference reading]
	39 Gb/s, OC-768/STM-256, 43 Gb/s, FEC43.02, 41.25 Gb/s 40GBase-xR1	± 6% of [difference reading]
	65 GHz	± 8% of [difference reading]
	80 GHz	± 9% of [difference reading]
80C10B-F1	39 Gb/s, OC-768/STM-256, 43 Gb/s (G.709), FEC 43.02 Gb/s, 41.25 Gb/s 40GBase-xR1	± 6% of [difference reading]
	65 GHz setting	± 8% of [difference reading]
	100GBase-xR4 25.781 Gb/s, 100Gbase-xR4 FEC 27.739 Gb/s	± 4% of [difference reading]
80C25GBE	65 GHz setting	± 8% of [difference reading]
	100GBase-xR4 25.781 Gb/s, 100Gbase-xR4 FEC 27.739 Gb/s	± 4% of [difference reading]
80C11	OC-192, 10.66 Gb/s, 10.71 Gb/s, 10Gbase-W, 10Gbase-R, 10GBE FEC, 10GFC, 10GFC FEC	± 2% of [difference reading]
	20 GHz	± 4% of [difference reading]
	30 GHz	± 6% of [difference reading]
Offset capabilities	Open loop. User assigned, fixed offset value is applied to channel.	

Name	Characteristics	
✓ Minimum optical bandwidth ⁵	<i>Setting</i>	<i>Bandwidth</i>
80C02	30 GHz	> 28 GHz > 30 GHz, typical ⁷
	20 GHz	> 20 GHz
	12.5 GHz	> 12.5 GHz
80C02-CR	30 GHz	> 28 GHz > 29 GHz, typical ⁷
80C07B	2.5 GHz	> 2.3 GHz
80C08C	10 GHz	> 9.5 GHz > 10 GHz, typical
80C10	30 GHz	> 30 GHz
	65 GHz	> 60 GHz > 65 GHz, typical
80C10B	30 GHz	> 30 GHz
	65 GHz	> 60 GHz > 65 GHz, typical
	80 GHz	> 75 GHz > 80 GHz, typical
80C10B-F1	65 GHz	> 60 GHz > 65 GHz, typical
80C11,	20 GHz	> 20 GHz
80C11-CR	30 GHz	> 28 GHz > 30 GHz (typical)
80C12	9 GHz (options F2, F3, F5, F6, FC)	> 8.5 GHz > 9 GHz, typical
	10 GHz (option 10G)	> 9.5 GHz > 10 GHz (typical)
80C25GBE	65 GHz	> 60 GHz > 65 GHz, typical

Name	Characteristics		
Rise time, typical For peak optical signal input which creates < 2 mW _{pp} modulation depth.	Setting	Rise Time	
	80C02	30 GHz	< 16 ps
20 GHz		< 25 ps	
12.5 GHz		< 40 ps	
OC-192/STM-64		47ps ± 10ps	
80C10	65 GHz	7.4 ps	
	30 GHz	16 ps	
	OC-768/STM-256	12 ps	
	G.709 43 Gb/s	11.2 ps	
80C10B	30 GHz	16 ps	
	80 GHz	6 ps	
80C10B, 80C10B-F1	65 GHz	7.4 ps	
	OC-768/STM-256	12 ps	
	FEC 43 Gb/s	11.2 ps	
	40Gbase-xR1	11.9 ps	
80C10B-F1, 80C25GBE	65 GHz	7.4 ps	
	100GBase-xR4	19.2 ps	
	100Gbase-xR4 w/ FEC	19.2 ps	
80C11	30 GHz	< 16 ps	
	20 GHz	< 25 ps	
	OC-192, 10Gbase-W, 10Gbase-R, 10GBE FEC, 10GFC, 10GFC FEC	47 ps ± 10 ps	
			10.66 Gb/s,
			10.71 Gb/s
			44 ps ± 10 ps

Specifications

Name	Characteristics		
Rise time, typical For peak optical signal input which creates < 200 mW _{pp} modulation depth.	<i>Setting</i>	<i>Rise Time</i>	
	80C07B	OC-3	3.0 ns ± 170 ps
		OC-12	750 ps ± 50 ps
		ENET1250	373 ps ± 30 ps
		FC1063	440 ps ± 35 ps
		FC2125	220 ps ± 18 ps
		OC-48, ENET2500, INFINIBAND, 2.5 GHz	187 ps ± 15 ps
Rise time, typical For peak optical signal input which creates < 500 mW _{pp} modulation depth.	<i>Setting</i>	<i>Rise Time</i>	
	80C08C	10 GHz	< 50 ps
	10GBASE-W, 10GBASE-R, OC-192/STM-64, 10GFC, 10GFC FEC, 10GBE FEC, 10.66 Gb/s, 10.71 Gb/s	47 ps ± 10 ps	
80C12	FC1063	440 ps ± 35 ps	
	FC2125	220 ps ± 18 ps	
	10GBase-X4	141 ps ± 12 ps	
	3.318 Gb/s	150 ps ± 12 ps	
	FC4250	110 ps ± 9 ps	
	9 GHz	< 56 ps	
	10 GHz	< 50 ps	
	OC-192,	47 ps ± 10 ps	
	10Gbase-W, 10Gbase-R, 10GBE FEC, 10GFC FEC, 10GFC		
	10.66 Gb/s, 10.71 Gb/s	47 ps ± 10 ps	

Name	Characteristics		
Time domain vertical response aberrations, typical For peak optical signal input < 5 mW _{p-p} .	<i>Setting</i>	<i>Aberrations</i>	
	80C02	OC-192/STM-64	
		12.5 GHz	
		20 GHz	
		30 GHz	
80C07B	All settings	< 5% (typical)	
80C11	OC-192, 10.66 Gb/s, 10.71 Gb/s, 10Gbase-W, 10Gbase-R, 10GBE FEC, 10GFC, 10GFC FEC	< 10%	
	20 GHz	< 20%	
	30 GHz	< 30%	
Time domain vertical response aberrations, typical For peak optical signal input < 2 mW _{p-p} .	<i>Setting</i>	<i>Aberrations</i>	
	80C08C	All settings	
	80C12	All filter settings (options F1, F2, F3, F4, F5, F6, FC)	< 5% (typical)
		9 GHz setting (options F2, F3, F5, F6, FC)	< 10% (typical)
		All settings (option 10G)	< 10% (typical)

Specifications

Name	Characteristics	
✓ Time domain vertical response aberrations, typical For peak optical signal input < 20 mW _{p-p} .	<i>Setting</i>	<i>Aberrations</i>
80C10	OC-768/STM-256, FEC43.02 Gb/s, 30 GHz	< 5% (maximum) < 3% (typical)
	65 GHz	< 10% (maximum) < 5% (typical)
80C10B	80 GHz	< 12% (maximum) < 7% (typical)
	30 GHz	< 5% (maximum) < 3% (typical)
80C10B, 80C10B-F1	OC-768/STM-256, FEC43.02 Gb/s, OTU3, 40GBase-xR1	< 5% (maximum) < 3% (typical)
	65 GHz	< 10% (maximum) < 5% (typical)
80C10B-F1, 80C25GBE	100GBase-xR4, 100GBase-xR4 FEC	< 5% (maximum) < 3% (typical)
	65 GHz	< 10% (maximum) < 5% (typical)
✓ Vertical equivalent optical noise (maximum and typical) ⁸	<i>Setting</i>	<i>Noise</i>
80C02	OC-192/STM-64, 12.5 GHz	< 10 μW _{rms} (maximum) < 6 μW _{rms} (typical)
	20 GHz	< 15 μW _{rms} (maximum) < 10 μW _{rms} (typical)
	30 GHz	< 30 μW _{rms} ⁷ (maximum) < 20 μW _{rms} (typical)
80C02-CR	OC-192/STM-64, 12.5 GHz	< 12 μW _{rms} (maximum) < 7 μW _{rms} (typical)
	20 GHz	< 20 μW _{rms} (maximum) < 15 μW _{rms} (typical)
	30 GHz	< 40 μW _{rms} ⁷ (maximum) < 30 μW _{rms} (typical)
80C07B ¹²	OC-3/STM-1, OC-12/STM-4, ENET1250, FC1063	< 1 μW _{rms} (maximum) < 0.50 μW _{rms} (typical)
	FC2125	< 1.5 μW _{rms} (maximum) < 0.85 μW _{rms} (typical)
	OC-48/STM-4, ENET2500, INFINIBAND, 2.5 GHz	< 1.5 μW _{rms} (maximum) < 0.70 μW _{rms} (typical)

Name	Characteristics		
80C08C (no clock recovery)	All settings	1310 nm, 1550 nm	< 3.0 μW_{rms} (maximum) < 1.7 μW_{rms} (typical)
		850 nm	< 5.0 μW_{rms} (maximum) < 3.0 μW_{rms} (typical)
		780 nm	< 6.0 μW_{rms} (maximum) < 3.5 μW_{rms} (typical)
80C08C-CR1, 80C08C-CR2 80C08C-CR4	All settings	1310 nm, 1550 nm	< 3.5 μW_{rms} (maximum) < 1.9 μW_{rms} (typical)
		850 nm	< 5.5 μW_{rms} (maximum) < 3.3 μW_{rms} (typical)
		780 nm	< 6.6 μW_{rms} (maximum) < 3.9 μW_{rms} (typical)
80C10	OC-768/ STM-256 43.02 Gb/s FEC	1310 nm	< 110 μW_{rms} (maximum) < 75 μW_{rms} (typical)
		1550 nm	< 60 μW_{rms} (maximum) < 40 μW_{rms} (typical)
	30 GHz	1310 nm	< 90 μW_{rms} (maximum) < 55 μW_{rms} (typical)
		1550 nm	< 50 μW_{rms} (maximum) < 30 μW_{rms} (typical)
	65 GHz	1310 nm	< 220 μW_{rms} (maximum) < 150 μW_{rms} (typical)
		1550 nm	< 120 μW_{rms} (maximum) < 85 μW_{rms} (typical)

Name	Characteristics		
80C10B, 80C25GBE	OC-768/ STM-256	1310 nm	< 50 μW_{rms} (maximum)
	43.02 Gb/s FEC		< 28 μW_{rms} (typical)
	41.25 Gb/s	1550 nm	< 38 μW_{rms} (maximum)
	40GBase-xR1		< 20 μW_{rms} (typical)
	100GBase-xR4,	1310 nm	< 38 μW_{rms} (maximum)
	100GBase-xR4		< 21 μW_{rms} (typical)
	FEC	1550 nm	< 28 μW_{rms} (maximum)
			< 15 μW_{rms} (typical)
	30 GHz	1310 nm	< 45 μW_{rms} (maximum)
			< 26 μW_{rms} (typical)
		1550 nm	< 35 μW_{rms} (maximum)
			< 19 μW_{rms} (typical)
	65 GHz	1310 nm	< 75 μW_{rms} (maximum)
			< 44 μW_{rms} (typical)
	1550 nm	< 60 μW_{rms} (maximum)	
		< 33 μW_{rms} (typical)	
80 GHz	1310 nm	< 130 μW_{rms} (maximum)	
		< 72 μW_{rms} (typical)	
	1550 nm	< 105 μW_{rms} (maximum)	
		< 55 μW_{rms} (typical)	
80C11 (no clock recovery)	OC-192, 10.66 Gb/s, 10.71 Gb/s, 10Gbase-W, 10Gbase-R, 10GBE FEC, 10GFC, 10GFC FEC		< 8 μW_{rms} (maximum)
			< 5.5 μW_{rms} (typical)
	20 GHz		< 14 μW_{rms} (maximum)
		< 10 μW_{rms} (typical)	
30 GHz		< 30 μW_{rms} (maximum)	
(Warranted at ambient temperatures below 30°C only)		< 20 μW_{rms} (typical)	
80C11-CR1, 80C11-CR2, 80C11-CR3, 80C11-CR4	OC-192, 10.66 Gb/s, 10.71 Gb/s, 10Gbase-W, 10Gbase-R, 10GBE FEC, 10GFC, 10GFC FEC		< 9 μW_{rms} (maximum)
			< 6 μW_{rms} (typical)
	20 GHz		< 15 μW_{rms} (maximum)
		< 11 μW_{rms} (typical)	
30 GHz		< 35 μW_{rms} (maximum)	
(Warranted at ambient temperatures below 30 °C only)		< 25 μW_{rms} (typical)	

Name	Characteristics		
80C12	FC1063	1310 nm, 1550 nm	< 2.5 μW_{rms} (maximum)
	FC2125		< 1.3 μW_{rms} (typical)
	FC4250	850 mm	< 4.0 μW_{rms} (maximum)
	10GBase-X4		< 2.1 μW_{rms} (typical)
	10GFC-X4		
	3.318 Gb/s		
	9 GHz	1310 nm, 1550 nm	< 5.0 μW_{rms} (maximum)
			< 2.4 μW_{rms} (typical)
		850 mm	< 8.0 μW_{rms} (maximum)
			< 3.8 μW_{rms} (typical)
All settings option	1310 nm, 1550 nm	< 5.0 μW_{rms} (maximum)	
		< 2.4 μW_{rms} (typical)	
10G	850 mm	< 8.0 μW_{rms} (maximum)	
		< 3.8 μW_{rms} (typical)	

✓ OC-3/STM-1 155 Mb/s Reference Receiver setting frequency response ⁷

In the 155.52 Mb/s NRZ setting, the scalar frequency response is verified to fall within fourth-order Bessel-Thompson reference receiver boundary limits.

The OC-3/STM-1 nominal scalar frequency response matches the ITU 155.52 Reference Receiver Nominal curve with the following tolerance:

Frequency (MHz)	Lower (dB)	Nominal (dB)	Upper (dB)
0.000	-0.50	0.00	0.50
23.33	-0.61	-0.11	0.39
46.65	-0.95	-0.45	0.05
69.98	-1.52	-1.02	-0.52
93.30	-2.36	-1.86	-1.36
116.7	-3.50	-3.00	-2.50
140.0	-5.67	-4.51	-3.35
155.5	-7.25	-5.71	-4.17
163.3	-8.08	-6.37	-4.66
186.6	-10.74	-8.54	-6.35
209.9	-13.55	-10.93	-8.31
233.3	-16.41	-13.41	-10.41

Name	Characteristics																																																				
✓ OC-12/STM-4 622 Mb/s Reference Receiver setting frequency response ⁷	In the 622.08 Mb/s NRZ setting, the scalar frequency response is verified to fall within fourth-order Bessel-Thompson reference receiver boundary limits. The OC-12/STM-4 nominal scalar frequency response matches the ITU 622.08 Reference Receiver Nominal curve with the following tolerance:																																																				
	<table border="1"> <thead> <tr> <th><i>Frequency (MHz)</i></th> <th><i>Lower (dB)</i></th> <th><i>Nominal (dB)</i></th> <th><i>Upper (dB)</i></th> </tr> </thead> <tbody> <tr><td>0.000</td><td>-0.50</td><td>0.00</td><td>0.50</td></tr> <tr><td>93.3</td><td>-0.61</td><td>-0.11</td><td>0.39 0.05</td></tr> <tr><td>186.6</td><td>-0.95</td><td>-0.45</td><td>-0.52</td></tr> <tr><td>279.9</td><td>-1.52</td><td>-1.02</td><td>-1.36</td></tr> <tr><td>373.2</td><td>-2.36</td><td>-1.86</td><td>-2.50</td></tr> <tr><td>466.7</td><td>-3.50</td><td>-3.00</td><td>-3.35</td></tr> <tr><td>559.9</td><td>-5.67</td><td>-4.51</td><td>-4.17</td></tr> <tr><td>622.1</td><td>-7.25</td><td>-5.71</td><td>-4.66</td></tr> <tr><td>653.2</td><td>-8.08</td><td>-6.37</td><td>-6.35</td></tr> <tr><td>746.5</td><td>-10.74</td><td>-8.54</td><td>-8.31</td></tr> <tr><td>839.8</td><td>-13.55</td><td>-10.93</td><td>-10.4</td></tr> <tr><td>933.1</td><td>-16.41</td><td>-13.41</td><td></td></tr> </tbody> </table>	<i>Frequency (MHz)</i>	<i>Lower (dB)</i>	<i>Nominal (dB)</i>	<i>Upper (dB)</i>	0.000	-0.50	0.00	0.50	93.3	-0.61	-0.11	0.39 0.05	186.6	-0.95	-0.45	-0.52	279.9	-1.52	-1.02	-1.36	373.2	-2.36	-1.86	-2.50	466.7	-3.50	-3.00	-3.35	559.9	-5.67	-4.51	-4.17	622.1	-7.25	-5.71	-4.66	653.2	-8.08	-6.37	-6.35	746.5	-10.74	-8.54	-8.31	839.8	-13.55	-10.93	-10.4	933.1	-16.41	-13.41	
<i>Frequency (MHz)</i>	<i>Lower (dB)</i>	<i>Nominal (dB)</i>	<i>Upper (dB)</i>																																																		
0.000	-0.50	0.00	0.50																																																		
93.3	-0.61	-0.11	0.39 0.05																																																		
186.6	-0.95	-0.45	-0.52																																																		
279.9	-1.52	-1.02	-1.36																																																		
373.2	-2.36	-1.86	-2.50																																																		
466.7	-3.50	-3.00	-3.35																																																		
559.9	-5.67	-4.51	-4.17																																																		
622.1	-7.25	-5.71	-4.66																																																		
653.2	-8.08	-6.37	-6.35																																																		
746.5	-10.74	-8.54	-8.31																																																		
839.8	-13.55	-10.93	-10.4																																																		
933.1	-16.41	-13.41																																																			
✓ OC-48/STM-16 2.488 Gb/s Reference Receiver setting frequency response ⁷	Scalar frequency response falls within industry standard, Bessel-Thompson reference receiver boundary limits. SONET OC-48/STM-16 frequency response boundary limits are described in ITU-T G.957 Tables I.1 and I.2. For convenience, the scalar frequency response of the output amplitude (for sinusoidal swept optical input) has been interpreted from the Bessel-Thompson transfer function and listed below:																																																				
	<table border="1"> <thead> <tr> <th><i>Frequency (MHz)</i></th> <th><i>Lower (dB)</i></th> <th><i>Nominal (dB)</i></th> <th><i>Upper (dB)</i></th> </tr> </thead> <tbody> <tr><td>0.000</td><td>-0.50</td><td>0.00</td><td>0.50</td></tr> <tr><td>373.3</td><td>-0.61</td><td>-0.11</td><td>0.39</td></tr> <tr><td>746.5</td><td>-0.95</td><td>-0.45</td><td>0.05</td></tr> <tr><td>1119.7</td><td>-1.52</td><td>-1.02</td><td>-0.52</td></tr> <tr><td>1493.1</td><td>-2.36</td><td>-1.86</td><td>-1.36</td></tr> <tr><td>1866.3</td><td>-3.50</td><td>-3.00</td><td>-2.50</td></tr> <tr><td>2239.5</td><td>-5.67</td><td>-4.51</td><td>-3.35</td></tr> <tr><td>2488.3</td><td>-7.25</td><td>-5.71</td><td>-4.17</td></tr> <tr><td>2612.8</td><td>-8.08</td><td>-6.37</td><td>-4.66</td></tr> <tr><td>2986.0</td><td>-10.74</td><td>-8.54</td><td>-6.35</td></tr> <tr><td>3359.3</td><td>-13.55</td><td>-10.93</td><td>-8.31</td></tr> <tr><td>3732.6</td><td>-16.41</td><td>-13.41</td><td>-10.41</td></tr> </tbody> </table>	<i>Frequency (MHz)</i>	<i>Lower (dB)</i>	<i>Nominal (dB)</i>	<i>Upper (dB)</i>	0.000	-0.50	0.00	0.50	373.3	-0.61	-0.11	0.39	746.5	-0.95	-0.45	0.05	1119.7	-1.52	-1.02	-0.52	1493.1	-2.36	-1.86	-1.36	1866.3	-3.50	-3.00	-2.50	2239.5	-5.67	-4.51	-3.35	2488.3	-7.25	-5.71	-4.17	2612.8	-8.08	-6.37	-4.66	2986.0	-10.74	-8.54	-6.35	3359.3	-13.55	-10.93	-8.31	3732.6	-16.41	-13.41	-10.41
<i>Frequency (MHz)</i>	<i>Lower (dB)</i>	<i>Nominal (dB)</i>	<i>Upper (dB)</i>																																																		
0.000	-0.50	0.00	0.50																																																		
373.3	-0.61	-0.11	0.39																																																		
746.5	-0.95	-0.45	0.05																																																		
1119.7	-1.52	-1.02	-0.52																																																		
1493.1	-2.36	-1.86	-1.36																																																		
1866.3	-3.50	-3.00	-2.50																																																		
2239.5	-5.67	-4.51	-3.35																																																		
2488.3	-7.25	-5.71	-4.17																																																		
2612.8	-8.08	-6.37	-4.66																																																		
2986.0	-10.74	-8.54	-6.35																																																		
3359.3	-13.55	-10.93	-8.31																																																		
3732.6	-16.41	-13.41	-10.41																																																		

Name	Characteristics																																																				
✓ OC-192/STM-64 9.953 Gb/s Reference Receiver setting frequency response ⁷	<p>Scalar frequency response falls within industry standard, Bessel-Thompson reference receiver boundary limits.</p> <p>Tektronix manufactures and tests the 80C02, 80C08C ¹⁰, 80C11 ¹⁰, and 80C12 optical modules using 10 Gb reference receivers to have a new superior and tighter tolerance OC-192/STM-64 Reference Receiver response. ITU experts recently agreed on the minimum performance specifications for 10 Gbit/s (STM-64/OC-192) optical reference receivers (San Antonio ITU Study Group 15 February 2000). These specifications are used to establish system interoperability and test conformance of optical interfaces to draft ITU-T Recommendation G.691 which is scheduled to be completed in April 2000 (see ITU table A.1/G.691 from the WD 16-48 document from Study Group 15 dated February 2000).</p> <p>For convenience, the scalar frequency response of the output amplitude (for sinusoidal swept optical input) has been interpreted from the published Bessel-Thompson transfer function and listed below:</p> <table border="1"> <thead> <tr> <th>Frequency (MHz)</th> <th>Lower (dB)</th> <th>Nominal (dB)</th> <th>Upper (dB)</th> </tr> </thead> <tbody> <tr><td>0.000</td><td>-0.85</td><td>0.00</td><td>0.85</td></tr> <tr><td>1493.2</td><td>-0.96</td><td>-0.11</td><td>0.74</td></tr> <tr><td>2986.0</td><td>-1.30</td><td>-0.45</td><td>0.40</td></tr> <tr><td>4478.8</td><td>-1.87</td><td>-1.02</td><td>0.17</td></tr> <tr><td>5972.4</td><td>-2.71</td><td>-1.86</td><td>-1.01</td></tr> <tr><td>7465.0</td><td>-3.86</td><td>-3.00</td><td>-2.16</td></tr> <tr><td>8958.0</td><td>-6.19</td><td>-4.51</td><td>-2.83</td></tr> <tr><td>9953.28</td><td>-7.87</td><td>-5.71</td><td>-3.55</td></tr> <tr><td>10451.2</td><td>-8.75</td><td>-6.37</td><td>-3.99</td></tr> <tr><td>11944.0</td><td>-11.53</td><td>-8.54</td><td>-5.56</td></tr> <tr><td>13437.2</td><td>-14.45</td><td>-10.93</td><td>-7.41</td></tr> <tr><td>14930.4</td><td>-17.41</td><td>-13.41</td><td>-9.41</td></tr> </tbody> </table>	Frequency (MHz)	Lower (dB)	Nominal (dB)	Upper (dB)	0.000	-0.85	0.00	0.85	1493.2	-0.96	-0.11	0.74	2986.0	-1.30	-0.45	0.40	4478.8	-1.87	-1.02	0.17	5972.4	-2.71	-1.86	-1.01	7465.0	-3.86	-3.00	-2.16	8958.0	-6.19	-4.51	-2.83	9953.28	-7.87	-5.71	-3.55	10451.2	-8.75	-6.37	-3.99	11944.0	-11.53	-8.54	-5.56	13437.2	-14.45	-10.93	-7.41	14930.4	-17.41	-13.41	-9.41
Frequency (MHz)	Lower (dB)	Nominal (dB)	Upper (dB)																																																		
0.000	-0.85	0.00	0.85																																																		
1493.2	-0.96	-0.11	0.74																																																		
2986.0	-1.30	-0.45	0.40																																																		
4478.8	-1.87	-1.02	0.17																																																		
5972.4	-2.71	-1.86	-1.01																																																		
7465.0	-3.86	-3.00	-2.16																																																		
8958.0	-6.19	-4.51	-2.83																																																		
9953.28	-7.87	-5.71	-3.55																																																		
10451.2	-8.75	-6.37	-3.99																																																		
11944.0	-11.53	-8.54	-5.56																																																		
13437.2	-14.45	-10.93	-7.41																																																		
14930.4	-17.41	-13.41	-9.41																																																		

✓ OC-768/STM-256 39.813 Gb/s Reference Receiver setting frequency response ⁷	<p>Bessel-Thompson Scalar Frequency Response curve and tolerances at various frequencies; based on ± 1 dB to $0.75 \times (\text{data rate})$ and ± 5.0 dB at $1.5 \times (\text{data rate})$.</p> <p>NOTE. The table below is a discrete list of some specific values that are commonly listed in ITU standards; curve and tolerances are actually a continuous function.</p> <table border="1"> <thead> <tr> <th>Frequency (GHz)</th> <th>Lower (dB)</th> <th>Nominal (dB)</th> <th>Upper (dB)</th> </tr> </thead> <tbody> <tr><td>0</td><td>-1.00</td><td>0</td><td>1.00</td></tr> <tr><td>5.97</td><td>-1.10</td><td>-0.10</td><td>0.90</td></tr> <tr><td>11.94</td><td>-1.45</td><td>-0.45</td><td>0.55</td></tr> <tr><td>17.92</td><td>-2.02</td><td>-1.02</td><td>-0.02</td></tr> <tr><td>23.89</td><td>-2.86</td><td>-1.86</td><td>-0.86</td></tr> <tr><td>29.86</td><td>-4.00</td><td>-3.00</td><td>-2.00</td></tr> <tr><td>35.83</td><td>-6.56</td><td>-4.51</td><td>-2.46</td></tr> <tr><td>39.81</td><td>-8.37</td><td>-5.71</td><td>-3.05</td></tr> <tr><td>41.80</td><td>-9.31</td><td>-6.37</td><td>-3.43</td></tr> <tr><td>47.78</td><td>-12.26</td><td>-8.54</td><td>-4.83</td></tr> <tr><td>53.75</td><td>-15.32</td><td>-10.93</td><td>-6.53</td></tr> <tr><td>59.72</td><td>-18.41</td><td>-13.41</td><td>-8.41</td></tr> </tbody> </table>	Frequency (GHz)	Lower (dB)	Nominal (dB)	Upper (dB)	0	-1.00	0	1.00	5.97	-1.10	-0.10	0.90	11.94	-1.45	-0.45	0.55	17.92	-2.02	-1.02	-0.02	23.89	-2.86	-1.86	-0.86	29.86	-4.00	-3.00	-2.00	35.83	-6.56	-4.51	-2.46	39.81	-8.37	-5.71	-3.05	41.80	-9.31	-6.37	-3.43	47.78	-12.26	-8.54	-4.83	53.75	-15.32	-10.93	-6.53	59.72	-18.41	-13.41	-8.41
Frequency (GHz)	Lower (dB)	Nominal (dB)	Upper (dB)																																																		
0	-1.00	0	1.00																																																		
5.97	-1.10	-0.10	0.90																																																		
11.94	-1.45	-0.45	0.55																																																		
17.92	-2.02	-1.02	-0.02																																																		
23.89	-2.86	-1.86	-0.86																																																		
29.86	-4.00	-3.00	-2.00																																																		
35.83	-6.56	-4.51	-2.46																																																		
39.81	-8.37	-5.71	-3.05																																																		
41.80	-9.31	-6.37	-3.43																																																		
47.78	-12.26	-8.54	-4.83																																																		
53.75	-15.32	-10.93	-6.53																																																		
59.72	-18.41	-13.41	-8.41																																																		

Name	Characteristics			
✓ 10GBASE-W Reference Receiver setting frequency response ⁷	For convenience, the scalar frequency response of the output amplitude (for sinusoidal swept optical input) has been interpreted from the published Bessel-Thompson transfer function for 10.00000 Gb/s reference receivers (as specified for the 9.95328 Gb/s rate of the 10GBASE-W) and listed below:			
✓ 10GBASE-R Reference Receiver setting frequency response ⁷	<i>Frequency (MHz)</i>	<i>Lower (dB)</i>	<i>Nominal (dB)</i>	<i>Upper (dB)</i>
✓ 10GBE FEC Reference Receiver setting frequency response ⁷	0	-0.85	0.00	0.85
✓ 10GFC Reference Receiver setting frequency response ⁷	1500	-0.96	-0.11	0.74
✓ 10GFC FEC Reference Receiver setting frequency response ⁷	3000	-1.30	-0.45	0.40
✓ 10.66 Data Filter setting frequency response ⁷	4500	-1.87	-1.02	0.17
✓ 10.709 Data Filter setting frequency response ⁷	6000	-2.71	-1.86	-1.01
✓ 10GBASE-X4 Reference Receiver setting frequency response ⁷	7500	-3.86	-3.00	-2.16
✓ 10GBASE-X4 Reference Receiver setting frequency response ⁷	9000	-6.19	-4.51	-2.83
✓ 10GBASE-X4 Reference Receiver setting frequency response ⁷	10000	-7.87	-5.71	-3.55
✓ 10GBASE-X4 Reference Receiver setting frequency response ⁷	10500	-8.75	-6.37	-3.99
✓ 10GBASE-X4 Reference Receiver setting frequency response ⁷	12000	-11.53	-8.54	-5.56
✓ 10GBASE-X4 Reference Receiver setting frequency response ⁷	13500	-14.45	-10.93	-7.41
✓ 10GBASE-X4 Reference Receiver setting frequency response ⁷	15000	-17.41	-13.41	-9.41
✓ 10GBASE-X4 Reference Receiver setting frequency response ⁷	In 10GBase-X4 setting, scalar frequency response falls within industry standard, Bessel-Thompson reference receiver boundary limits. 10GBASE-X4 frequency response boundary limits are derived by simply scaling all frequency values by 2.5X as described in IEEE 802.3z section 38.6.5 (this section refers to ITU G.957 for tolerances).			
✓ 10GBASE-X4 Reference Receiver setting frequency response ⁷	For convenience, the scalar frequency response of the output amplitude (for sinusoidal swept optical input) has been interpreted from the Bessel-Thompson transfer function and listed below:			
✓ 10GBASE-X4 Reference Receiver setting frequency response ⁷	<i>(MHz) Frequency</i>	<i>Lower (dB)</i>	<i>(dB) Nominal</i>	<i>Upper (dB)</i>
✓ 10GBASE-X4 Reference Receiver setting frequency response ⁷	0.000	-0.50	0.00	0.50
✓ 10GBASE-X4 Reference Receiver setting frequency response ⁷	468.8	-0.61	-0.11	0.39
✓ 10GBASE-X4 Reference Receiver setting frequency response ⁷	937.5	-0.95	-0.45	0.05
✓ 10GBASE-X4 Reference Receiver setting frequency response ⁷	1406	-1.52	-1.02	-0.52
✓ 10GBASE-X4 Reference Receiver setting frequency response ⁷	1875	-2.36	-1.86	-1.36
✓ 10GBASE-X4 Reference Receiver setting frequency response ⁷	2344	-3.50	-3.00	-2.50
✓ 10GBASE-X4 Reference Receiver setting frequency response ⁷	2813	-5.67	-4.51	-3.35
✓ 10GBASE-X4 Reference Receiver setting frequency response ⁷	3125	-7.25	-5.71	-4.17
✓ 10GBASE-X4 Reference Receiver setting frequency response ⁷	3281	-8.08	-6.37	-4.65
✓ 10GBASE-X4 Reference Receiver setting frequency response ⁷	3750	-10.74	-8.54	-6.35
✓ 10GBASE-X4 Reference Receiver setting frequency response ⁷	4219	-13.55	-10.93	-8.31
✓ 10GBASE-X4 Reference Receiver setting frequency response ⁷	4688	-16.41	-13.41	-10.41

Name	Characteristics																																																				
✓ 10GFC-X4 (3.188 Gb/s) Reference Receiver setting frequency response ⁷	<p>In 10GFC-X4 setting, scalar frequency response falls within Industry standard, Bessel-Thompson reference receiver boundary limits.</p> <p>10GFC-X4 frequency response boundary limits are described in ANSI FC-PC. The scalar frequency response of the output amplitude (for sinusoidal swept optical input) has been interpreted from the published Bessel-Thompson transfer function and listed below (based on ± 3 0.5dB from DC to 0.75x(rate) and (plus-min)3 3.0dB at 1.5x(rate):</p>																																																				
	<table border="1"> <thead> <tr> <th><i>(MHz) Frequency</i></th> <th><i>Lower (dB)</i></th> <th><i>(dB) Nominal</i></th> <th><i>Upper (dB)</i></th> </tr> </thead> <tbody> <tr><td>0.000</td><td>-0.50</td><td>0.00</td><td>0.50</td></tr> <tr><td>478.1</td><td>-0.61</td><td>-0.11</td><td>0.39</td></tr> <tr><td>956.3</td><td>-0.95</td><td>-0.45</td><td>0.05</td></tr> <tr><td>1434</td><td>-1.52</td><td>-1.02</td><td>-0.52</td></tr> <tr><td>1913</td><td>-2.36</td><td>-1.86</td><td>-1.36</td></tr> <tr><td>2391</td><td>-3.50</td><td>-3.00</td><td>-2.50</td></tr> <tr><td>2869</td><td>-5.67</td><td>-4.51</td><td>-3.35</td></tr> <tr><td>3188</td><td>-7.25</td><td>-5.71</td><td>-4.17</td></tr> <tr><td>3347</td><td>-8.08</td><td>-6.37</td><td>-4.65</td></tr> <tr><td>3825</td><td>-10.74</td><td>-8.54</td><td>-6.35</td></tr> <tr><td>4303</td><td>-13.55</td><td>-10.93</td><td>-8.31</td></tr> <tr><td>4781</td><td>-16.41</td><td>-13.41</td><td>-10.41</td></tr> </tbody> </table>	<i>(MHz) Frequency</i>	<i>Lower (dB)</i>	<i>(dB) Nominal</i>	<i>Upper (dB)</i>	0.000	-0.50	0.00	0.50	478.1	-0.61	-0.11	0.39	956.3	-0.95	-0.45	0.05	1434	-1.52	-1.02	-0.52	1913	-2.36	-1.86	-1.36	2391	-3.50	-3.00	-2.50	2869	-5.67	-4.51	-3.35	3188	-7.25	-5.71	-4.17	3347	-8.08	-6.37	-4.65	3825	-10.74	-8.54	-6.35	4303	-13.55	-10.93	-8.31	4781	-16.41	-13.41	-10.41
<i>(MHz) Frequency</i>	<i>Lower (dB)</i>	<i>(dB) Nominal</i>	<i>Upper (dB)</i>																																																		
0.000	-0.50	0.00	0.50																																																		
478.1	-0.61	-0.11	0.39																																																		
956.3	-0.95	-0.45	0.05																																																		
1434	-1.52	-1.02	-0.52																																																		
1913	-2.36	-1.86	-1.36																																																		
2391	-3.50	-3.00	-2.50																																																		
2869	-5.67	-4.51	-3.35																																																		
3188	-7.25	-5.71	-4.17																																																		
3347	-8.08	-6.37	-4.65																																																		
3825	-10.74	-8.54	-6.35																																																		
4303	-13.55	-10.93	-8.31																																																		
4781	-16.41	-13.41	-10.41																																																		
✓ 10.66 Gb/s Reference Receiver setting frequency response ⁷	<p>This Reference Receiver is essentially identical to the OC-192 9.95328 Gb/s rate with the following changes: the frequency scale for the tolerance curves and nominal -3 dB breakpoints are scaled linearly by the ratio of (10.664 Gb/s)/(9.95328 Gb/s); for example: the 9.953 Gb/s reference receiver has a nominal -3 dB response at $0.75 \times 9.95328 \text{ GHz} = 7.465 \text{ GHz}$. This 10.66 Gb reference receiver has a nominal -3 dB response at $(10.664/9.95328) \times 7.465 \text{ GHz} = 7.998 \text{ GHz}$.</p> <p>For convenience, the scalar frequency response of the output amplitude (for sinusoidal swept optical input) has been interpreted from the published Bessel-Thompson transfer function, the frequencies scaled as described above, and then listed below:</p>																																																				
	<table border="1"> <thead> <tr> <th><i>(MHz) Frequency</i></th> <th><i>Lower (dB)</i></th> <th><i>(dB) Nominal</i></th> <th><i>Upper (dB)</i></th> </tr> </thead> <tbody> <tr><td>0</td><td>-0.85</td><td>0</td><td>0.85</td></tr> <tr><td>1599.8</td><td>-0.96</td><td>-0.11</td><td>0.74</td></tr> <tr><td>3199.2</td><td>-1.30</td><td>-0.45</td><td>0.40</td></tr> <tr><td>4798.6</td><td>-1.87</td><td>-1.02</td><td>-0.17</td></tr> <tr><td>6398.9</td><td>-2.71</td><td>-1.86</td><td>-1.01</td></tr> <tr><td>7998.0</td><td>-3.86</td><td>-3.00</td><td>-2.16</td></tr> <tr><td>9597.7</td><td>-6.19</td><td>-4.51</td><td>-2.83</td></tr> <tr><td>10664.0</td><td>-7.87</td><td>-5.71</td><td>-3.55</td></tr> <tr><td>11197.5</td><td>-8.75</td><td>-6.37</td><td>-3.99</td></tr> <tr><td>12796.9</td><td>-11.53</td><td>-8.54</td><td>-5.56</td></tr> <tr><td>14396.7</td><td>-14.45</td><td>-10.93</td><td>-7.41</td></tr> <tr><td>15996.5</td><td>-17.41</td><td>-13.41</td><td>-9.41</td></tr> </tbody> </table>	<i>(MHz) Frequency</i>	<i>Lower (dB)</i>	<i>(dB) Nominal</i>	<i>Upper (dB)</i>	0	-0.85	0	0.85	1599.8	-0.96	-0.11	0.74	3199.2	-1.30	-0.45	0.40	4798.6	-1.87	-1.02	-0.17	6398.9	-2.71	-1.86	-1.01	7998.0	-3.86	-3.00	-2.16	9597.7	-6.19	-4.51	-2.83	10664.0	-7.87	-5.71	-3.55	11197.5	-8.75	-6.37	-3.99	12796.9	-11.53	-8.54	-5.56	14396.7	-14.45	-10.93	-7.41	15996.5	-17.41	-13.41	-9.41
<i>(MHz) Frequency</i>	<i>Lower (dB)</i>	<i>(dB) Nominal</i>	<i>Upper (dB)</i>																																																		
0	-0.85	0	0.85																																																		
1599.8	-0.96	-0.11	0.74																																																		
3199.2	-1.30	-0.45	0.40																																																		
4798.6	-1.87	-1.02	-0.17																																																		
6398.9	-2.71	-1.86	-1.01																																																		
7998.0	-3.86	-3.00	-2.16																																																		
9597.7	-6.19	-4.51	-2.83																																																		
10664.0	-7.87	-5.71	-3.55																																																		
11197.5	-8.75	-6.37	-3.99																																																		
12796.9	-11.53	-8.54	-5.56																																																		
14396.7	-14.45	-10.93	-7.41																																																		
15996.5	-17.41	-13.41	-9.41																																																		

Name	Characteristics
✓ 10.71 Gb/s Reference Receiver setting frequency response ⁷	<p>This Reference Receiver is essentially identical to that for the OC-192 9.95328 Gb/s rate with the following changes: the frequency scale for the tolerance curves and nominal -3 dB breakpoints are scaled linearly by the ratio of (10.709 Gb/s)/(9.95328 Gb/s); for example: the 9.953 Gb/s reference receiver has a nominal -3 dB response at $0.75 \times 9.95328 \text{ GHz} = 7.465 \text{ GHz}$. This 10.71 Gb reference receiver has a nominal -3 dB response at $(10.709/9.95328) \times 7.465 \text{ GHz} = 8.032 \text{ GHz}$.</p> <p>For convenience, the scalar frequency response of the output amplitude (for sinusoidal swept optical input) has been interpreted from the published Bessel-Thompson transfer function, the frequencies scaled as described above, and then listed below:</p>

<i>(MHz) Frequency</i>	<i>Lower (dB)</i>	<i>(dB) Nominal</i>	<i>Upper (dB)</i>
0	-0.85	0	0.85
1606.6	-0.96	-0.11	0.74
3212.8	-1.30	-0.45	0.40
4819.0	-1.87	-1.02	-0.17
6426.0	-2.71	-1.86	-1.01
8032.0	-3.86	-3.00	-2.16
9638.4	-6.19	-4.51	-2.83
10709.2	-7.87	-5.71	-3.55
11245.0	-8.75	-6.37	-3.99
12851.1	-11.53	-8.54	-5.56
14457.7	-14.45	-10.93	-7.41
16064.4	-17.41	-13.41	-9.41

✓ FEC 43.02 Gb/s Reference Receiver setting frequency response ⁷	<p>The forward error correction method defined in ITU-T standard G.709 creates an additional overhead upon a standard OC-768 (STM256) 40 Gb/s data stream in which the data rate is effectively increased by a ratio of 255/236. Table 7-1 in G.709 standard lists this explicit serial data rate on the physical layer.</p>
---	--

<i>Frequency (GHz)</i>	<i>Lower (dB)</i>	<i>Nominal (dB)</i>	<i>Upper (dB)</i>
0	-1.00	0	1.00
6.45	-1.10	-0.10	0.90
12.90	-1.45	-0.45	0.55
19.36	-2.02	-1.02	-0.02
25.81	-2.86	-1.86	-0.86
32.26	-4.00	-3.00	-2.00
38.71	-6.56	-4.51	-2.46
43.02	-8.37	-5.71	-3.05
45.17	-9.31	-6.37	-3.43
51.63	-12.26	-8.54	-4.83
58.08	-15.32	-10.93	-6.53
64.53	-18.41	-13.41	-8.41

Name	Characteristics																																																				
✓ ENET2500 (2 GBE) 2.50 Gb/s Reference Receiver setting frequency response ⁷	<p>Scalar frequency response falls within industry standard, Bessel-Thompson reference receiver boundary limits.</p> <p>2.50 Gb/s frequency response boundary limits are derived by simply scaling all frequency values by 2X as described in IEEE 802.3z section 38.6.5 (this section refers to ITU G.957 for tolerances). For convenience, the scalar frequency response of the output amplitude (for sinusoidal swept optical input) has been interpreted from the Bessel-Thompson transfer function and listed below:</p> <table border="1" data-bbox="540 495 1494 905"> <thead> <tr> <th>Frequency (MHz)</th> <th>Lower (dB)</th> <th>Nominal (dB)</th> <th>Upper (dB)</th> </tr> </thead> <tbody> <tr><td>0.000</td><td>-0.50</td><td>0.00</td><td>0.50</td></tr> <tr><td>375</td><td>-0.61</td><td>-0.11</td><td>0.39</td></tr> <tr><td>750</td><td>-0.95</td><td>-0.45</td><td>0.05</td></tr> <tr><td>1125</td><td>-1.52</td><td>-1.02</td><td>-0.52</td></tr> <tr><td>1500</td><td>-2.36</td><td>-1.86</td><td>-1.36</td></tr> <tr><td>1875</td><td>-3.50</td><td>-3.00</td><td>-2.50</td></tr> <tr><td>2250</td><td>-5.67</td><td>-4.51</td><td>-3.35</td></tr> <tr><td>2500</td><td>-7.25</td><td>-5.71</td><td>-4.17</td></tr> <tr><td>2625</td><td>-8.08</td><td>-6.37</td><td>-4.66</td></tr> <tr><td>3000</td><td>-10.74</td><td>-8.54</td><td>-6.35</td></tr> <tr><td>3375</td><td>-13.55</td><td>-10.93</td><td>-8.31</td></tr> <tr><td>3750</td><td>-16.41</td><td>-13.41</td><td>-10.41</td></tr> </tbody> </table>	Frequency (MHz)	Lower (dB)	Nominal (dB)	Upper (dB)	0.000	-0.50	0.00	0.50	375	-0.61	-0.11	0.39	750	-0.95	-0.45	0.05	1125	-1.52	-1.02	-0.52	1500	-2.36	-1.86	-1.36	1875	-3.50	-3.00	-2.50	2250	-5.67	-4.51	-3.35	2500	-7.25	-5.71	-4.17	2625	-8.08	-6.37	-4.66	3000	-10.74	-8.54	-6.35	3375	-13.55	-10.93	-8.31	3750	-16.41	-13.41	-10.41
Frequency (MHz)	Lower (dB)	Nominal (dB)	Upper (dB)																																																		
0.000	-0.50	0.00	0.50																																																		
375	-0.61	-0.11	0.39																																																		
750	-0.95	-0.45	0.05																																																		
1125	-1.52	-1.02	-0.52																																																		
1500	-2.36	-1.86	-1.36																																																		
1875	-3.50	-3.00	-2.50																																																		
2250	-5.67	-4.51	-3.35																																																		
2500	-7.25	-5.71	-4.17																																																		
2625	-8.08	-6.37	-4.66																																																		
3000	-10.74	-8.54	-6.35																																																		
3375	-13.55	-10.93	-8.31																																																		
3750	-16.41	-13.41	-10.41																																																		
✓ ENET1250 (GBE) 1.25 Gb/s Reference Receiver setting frequency response ⁷	<p>Scalar frequency response falls within industry standard, Bessel-Thompson reference receiver boundary limits.</p> <p>1.250 Gb/s frequency response boundary limits are described in IEEE 802.3z section 38.6.5 (this section refers to ITU G.957 for tolerances).</p> <p>For convenience, the scalar frequency response of the output amplitude (for sinusoidal swept optical input) has been interpreted from the Bessel-Thompson transfer function and listed below:</p> <table border="1" data-bbox="540 1150 1494 1558"> <thead> <tr> <th>Frequency (MHz)</th> <th>Lower (dB)</th> <th>Nominal (dB)</th> <th>Upper (dB)</th> </tr> </thead> <tbody> <tr><td>0.000</td><td>-0.50</td><td>0.00</td><td>0.50</td></tr> <tr><td>187.5</td><td>-0.61</td><td>-0.11</td><td>0.39</td></tr> <tr><td>375</td><td>-0.95</td><td>-0.45</td><td>0.05</td></tr> <tr><td>562.5</td><td>-1.52</td><td>-1.02</td><td>-0.52</td></tr> <tr><td>750</td><td>-2.36</td><td>-1.86</td><td>-1.36</td></tr> <tr><td>937.5</td><td>-3.50</td><td>-3.00</td><td>-2.50</td></tr> <tr><td>1125</td><td>-5.67</td><td>-4.51</td><td>-3.35</td></tr> <tr><td>1250</td><td>-7.25</td><td>-5.71</td><td>-4.17</td></tr> <tr><td>1312.5</td><td>-8.08</td><td>-6.37</td><td>-4.66</td></tr> <tr><td>1500</td><td>-10.74</td><td>-8.54</td><td>-6.35</td></tr> <tr><td>1687.5</td><td>-13.55</td><td>-10.93</td><td>-8.31</td></tr> <tr><td>1875</td><td>-16.41</td><td>-13.41</td><td>-10.41</td></tr> </tbody> </table>	Frequency (MHz)	Lower (dB)	Nominal (dB)	Upper (dB)	0.000	-0.50	0.00	0.50	187.5	-0.61	-0.11	0.39	375	-0.95	-0.45	0.05	562.5	-1.52	-1.02	-0.52	750	-2.36	-1.86	-1.36	937.5	-3.50	-3.00	-2.50	1125	-5.67	-4.51	-3.35	1250	-7.25	-5.71	-4.17	1312.5	-8.08	-6.37	-4.66	1500	-10.74	-8.54	-6.35	1687.5	-13.55	-10.93	-8.31	1875	-16.41	-13.41	-10.41
Frequency (MHz)	Lower (dB)	Nominal (dB)	Upper (dB)																																																		
0.000	-0.50	0.00	0.50																																																		
187.5	-0.61	-0.11	0.39																																																		
375	-0.95	-0.45	0.05																																																		
562.5	-1.52	-1.02	-0.52																																																		
750	-2.36	-1.86	-1.36																																																		
937.5	-3.50	-3.00	-2.50																																																		
1125	-5.67	-4.51	-3.35																																																		
1250	-7.25	-5.71	-4.17																																																		
1312.5	-8.08	-6.37	-4.66																																																		
1500	-10.74	-8.54	-6.35																																																		
1687.5	-13.55	-10.93	-8.31																																																		
1875	-16.41	-13.41	-10.41																																																		

Name	Characteristics																																																				
✓ FC1063 (1.0625 Gb/s) Reference Receiver setting frequency response ⁷	<p>In FC1063 setting, scalar frequency response falls within industry standard, Bessel-Thompson reference receiver boundary limits.</p> <p>Fiber Channel frequency response boundary limits are described in ANSI FC-PC. For convenience, the scalar frequency response of the output amplitude (for sinusoidal swept optical input) has been interpreted from the published Bessel-Thompson transfer function and listed below:</p> <table border="1" data-bbox="505 464 1464 873"> <thead> <tr> <th>Frequency (MHz)</th> <th>Lower (dB)</th> <th>Nominal (dB)</th> <th>Upper (dB)</th> </tr> </thead> <tbody> <tr><td>0.000</td><td>-0.50</td><td>0.00</td><td>0.50</td></tr> <tr><td>159.5</td><td>-0.61</td><td>-0.11</td><td>0.39</td></tr> <tr><td>318.9</td><td>-0.95</td><td>-0.45</td><td>0.05</td></tr> <tr><td>478.4</td><td>-1.52</td><td>-1.02</td><td>-0.52</td></tr> <tr><td>637.9</td><td>-2.36</td><td>-1.86</td><td>-1.36</td></tr> <tr><td>797.4</td><td>-3.50</td><td>-3.00</td><td>-2.50</td></tr> <tr><td>956.8</td><td>-5.67</td><td>-4.51</td><td>-3.35</td></tr> <tr><td>1063</td><td>-7.25</td><td>-5.71</td><td>-4.17</td></tr> <tr><td>1116</td><td>-8.08</td><td>-6.37</td><td>-4.66</td></tr> <tr><td>1275</td><td>-10.74</td><td>-8.54</td><td>-6.35</td></tr> <tr><td>1435</td><td>-13.55</td><td>-10.93</td><td>-8.31</td></tr> <tr><td>1595</td><td>-16.41</td><td>-13.41</td><td>-10.41</td></tr> </tbody> </table>	Frequency (MHz)	Lower (dB)	Nominal (dB)	Upper (dB)	0.000	-0.50	0.00	0.50	159.5	-0.61	-0.11	0.39	318.9	-0.95	-0.45	0.05	478.4	-1.52	-1.02	-0.52	637.9	-2.36	-1.86	-1.36	797.4	-3.50	-3.00	-2.50	956.8	-5.67	-4.51	-3.35	1063	-7.25	-5.71	-4.17	1116	-8.08	-6.37	-4.66	1275	-10.74	-8.54	-6.35	1435	-13.55	-10.93	-8.31	1595	-16.41	-13.41	-10.41
Frequency (MHz)	Lower (dB)	Nominal (dB)	Upper (dB)																																																		
0.000	-0.50	0.00	0.50																																																		
159.5	-0.61	-0.11	0.39																																																		
318.9	-0.95	-0.45	0.05																																																		
478.4	-1.52	-1.02	-0.52																																																		
637.9	-2.36	-1.86	-1.36																																																		
797.4	-3.50	-3.00	-2.50																																																		
956.8	-5.67	-4.51	-3.35																																																		
1063	-7.25	-5.71	-4.17																																																		
1116	-8.08	-6.37	-4.66																																																		
1275	-10.74	-8.54	-6.35																																																		
1435	-13.55	-10.93	-8.31																																																		
1595	-16.41	-13.41	-10.41																																																		
✓ FC2125 (2.125 Gb/s) Reference Receiver setting frequency response ⁷	<p>In FC2125 setting, scalar frequency response falls within industry standard, Bessel-Thompson reference receiver boundary limits.</p> <p>2G FiberChannel frequency response boundary limits are described in ANSI FC-PC. For convenience, the scalar frequency response of the output amplitude (for sinusoidal swept optical input) has been interpreted from the published Bessel-Thompson transfer function and listed below:</p> <table border="1" data-bbox="505 1079 1464 1493"> <thead> <tr> <th>Frequency (MHz)</th> <th>Lower (dB)</th> <th>Nominal (dB)</th> <th>Upper (dB)</th> </tr> </thead> <tbody> <tr><td>0.000</td><td>-0.50</td><td>0.00</td><td>0.50</td></tr> <tr><td>318.8</td><td>-0.61</td><td>-0.11</td><td>0.39</td></tr> <tr><td>637.5</td><td>-0.95</td><td>-0.45</td><td>0.05</td></tr> <tr><td>956.3</td><td>-1.52</td><td>-1.02</td><td>-0.52</td></tr> <tr><td>1275</td><td>-2.36</td><td>-1.86</td><td>-1.36</td></tr> <tr><td>1594</td><td>-3.50</td><td>-3.00</td><td>-2.50</td></tr> <tr><td>1913</td><td>-5.67</td><td>-4.51</td><td>-3.35</td></tr> <tr><td>2125</td><td>-7.25</td><td>-5.71</td><td>-4.17</td></tr> <tr><td>2231</td><td>-8.08</td><td>-6.37</td><td>-4.65</td></tr> <tr><td>2550</td><td>-10.74</td><td>-8.54</td><td>-6.35</td></tr> <tr><td>2869</td><td>-13.55</td><td>-10.93</td><td>-8.31</td></tr> <tr><td>3188</td><td>-16.41</td><td>-13.41</td><td>-10.41</td></tr> </tbody> </table>	Frequency (MHz)	Lower (dB)	Nominal (dB)	Upper (dB)	0.000	-0.50	0.00	0.50	318.8	-0.61	-0.11	0.39	637.5	-0.95	-0.45	0.05	956.3	-1.52	-1.02	-0.52	1275	-2.36	-1.86	-1.36	1594	-3.50	-3.00	-2.50	1913	-5.67	-4.51	-3.35	2125	-7.25	-5.71	-4.17	2231	-8.08	-6.37	-4.65	2550	-10.74	-8.54	-6.35	2869	-13.55	-10.93	-8.31	3188	-16.41	-13.41	-10.41
Frequency (MHz)	Lower (dB)	Nominal (dB)	Upper (dB)																																																		
0.000	-0.50	0.00	0.50																																																		
318.8	-0.61	-0.11	0.39																																																		
637.5	-0.95	-0.45	0.05																																																		
956.3	-1.52	-1.02	-0.52																																																		
1275	-2.36	-1.86	-1.36																																																		
1594	-3.50	-3.00	-2.50																																																		
1913	-5.67	-4.51	-3.35																																																		
2125	-7.25	-5.71	-4.17																																																		
2231	-8.08	-6.37	-4.65																																																		
2550	-10.74	-8.54	-6.35																																																		
2869	-13.55	-10.93	-8.31																																																		
3188	-16.41	-13.41	-10.41																																																		

Name	Characteristics																																																				
✓ VSR-5 (3.318 Gb/s) Reference Receiver setting frequency response ⁷	<p>In 3.318 Gb/s setting, scalar frequency response falls within industry standard, Bessel-Thompson reference receiver boundary limits.</p> <p>At the time of publishing this document, a standard for VSR-5 frequency response boundary limits has not been defined. The scalar frequency response curve and tolerance boundaries used for 10GBase-X4 scaled to the VSR-5 bit rate will be used for this rate until a standard has been defined.</p> <p>The exact bit rate is given by the formula:</p> $\frac{768 \times 51.84 \text{ Mb/s}}{12} = 3317.76 \text{ Mb/s}$ <p>For convenience, the scalar frequency response of the output amplitude (for sinusoidal swept optical input) has been interpreted from the published Bessel-Thompson transfer function and listed below:</p> <table border="1" data-bbox="540 737 1494 1150"> <thead> <tr> <th>Frequency (MHz)</th> <th>Lower (dB)</th> <th>Nominal (dB)</th> <th>Upper (dB)</th> </tr> </thead> <tbody> <tr><td>0.000</td><td>-0.50</td><td>0.00</td><td>0.50</td></tr> <tr><td>497.7</td><td>-0.61</td><td>-0.11</td><td>0.39</td></tr> <tr><td>995.3</td><td>-0.95</td><td>-0.45</td><td>0.05</td></tr> <tr><td>1493</td><td>-1.52</td><td>-1.02</td><td>-0.52</td></tr> <tr><td>1991</td><td>-2.36</td><td>-1.86</td><td>-1.36</td></tr> <tr><td>2488</td><td>-3.50</td><td>-3.00</td><td>-2.50</td></tr> <tr><td>2986</td><td>-5.67</td><td>-4.51</td><td>-3.35</td></tr> <tr><td>3318</td><td>-7.25</td><td>-5.71</td><td>-4.17</td></tr> <tr><td>3484</td><td>-8.08</td><td>-6.37</td><td>-4.65</td></tr> <tr><td>3981</td><td>-10.74</td><td>-8.54</td><td>-6.35</td></tr> <tr><td>4479</td><td>-13.55</td><td>-10.93</td><td>-8.31</td></tr> <tr><td>4977</td><td>-16.41</td><td>-13.41</td><td>-10.41</td></tr> </tbody> </table>	Frequency (MHz)	Lower (dB)	Nominal (dB)	Upper (dB)	0.000	-0.50	0.00	0.50	497.7	-0.61	-0.11	0.39	995.3	-0.95	-0.45	0.05	1493	-1.52	-1.02	-0.52	1991	-2.36	-1.86	-1.36	2488	-3.50	-3.00	-2.50	2986	-5.67	-4.51	-3.35	3318	-7.25	-5.71	-4.17	3484	-8.08	-6.37	-4.65	3981	-10.74	-8.54	-6.35	4479	-13.55	-10.93	-8.31	4977	-16.41	-13.41	-10.41
Frequency (MHz)	Lower (dB)	Nominal (dB)	Upper (dB)																																																		
0.000	-0.50	0.00	0.50																																																		
497.7	-0.61	-0.11	0.39																																																		
995.3	-0.95	-0.45	0.05																																																		
1493	-1.52	-1.02	-0.52																																																		
1991	-2.36	-1.86	-1.36																																																		
2488	-3.50	-3.00	-2.50																																																		
2986	-5.67	-4.51	-3.35																																																		
3318	-7.25	-5.71	-4.17																																																		
3484	-8.08	-6.37	-4.65																																																		
3981	-10.74	-8.54	-6.35																																																		
4479	-13.55	-10.93	-8.31																																																		
4977	-16.41	-13.41	-10.41																																																		
✓ 100GBase-xR4 (25.781 Gb/s, ENET25781) and 100GBase-xR4 w/ FEC (27.739 Gb/s, ENET27739) Reference Receiver setting frequency response ¹⁰	<p>The IEEE P802.3ba 40/100GbE task force has defined the ORR specifications for 100GBase 4-lane variants as follows (per section 88.9.8 in P802.3ba D2.0, March 2009): a standard 4th-order Bessel-Thompson Scalar Frequency Response with a reference frequency of 0.75x(nominal data rate), which is 0.75*25 GHz = 18.75 GHz, and tolerances based on ±0.85 dB DC to 0.75x(nominal data rate) and expanding to ±4.0 dB at 1.5x(nominal data rate) with logarithmic interpolation for frequency values in between.</p> <table border="1" data-bbox="540 1352 1494 1759"> <thead> <tr> <th>Frequency (MHz)</th> <th>Lower (dB)</th> <th>Nominal (dB)</th> <th>Upper (dB)</th> </tr> </thead> <tbody> <tr><td>0</td><td>-0.85</td><td>0</td><td>0.85</td></tr> <tr><td>3750</td><td>-0.96</td><td>-0.11</td><td>0.74</td></tr> <tr><td>7500</td><td>-1.30</td><td>-0.45</td><td>0.40</td></tr> <tr><td>11250</td><td>-1.87</td><td>-1.02</td><td>-0.17</td></tr> <tr><td>15000</td><td>-2.71</td><td>-1.86</td><td>-1.01</td></tr> <tr><td>18750</td><td>-3.86</td><td>-3.00</td><td>-2.16</td></tr> <tr><td>22500</td><td>-6.19</td><td>-4.51</td><td>-2.83</td></tr> <tr><td>25000</td><td>-7.87</td><td>-5.71</td><td>-3.55</td></tr> <tr><td>26250</td><td>-8.75</td><td>-6.37</td><td>-3.99</td></tr> <tr><td>30000</td><td>-11.53</td><td>-8.54</td><td>-5.56</td></tr> <tr><td>33750</td><td>-14.45</td><td>-10.93</td><td>-7.41</td></tr> <tr><td>37500</td><td>-17.41</td><td>-13.41</td><td>-9.41</td></tr> </tbody> </table>	Frequency (MHz)	Lower (dB)	Nominal (dB)	Upper (dB)	0	-0.85	0	0.85	3750	-0.96	-0.11	0.74	7500	-1.30	-0.45	0.40	11250	-1.87	-1.02	-0.17	15000	-2.71	-1.86	-1.01	18750	-3.86	-3.00	-2.16	22500	-6.19	-4.51	-2.83	25000	-7.87	-5.71	-3.55	26250	-8.75	-6.37	-3.99	30000	-11.53	-8.54	-5.56	33750	-14.45	-10.93	-7.41	37500	-17.41	-13.41	-9.41
Frequency (MHz)	Lower (dB)	Nominal (dB)	Upper (dB)																																																		
0	-0.85	0	0.85																																																		
3750	-0.96	-0.11	0.74																																																		
7500	-1.30	-0.45	0.40																																																		
11250	-1.87	-1.02	-0.17																																																		
15000	-2.71	-1.86	-1.01																																																		
18750	-3.86	-3.00	-2.16																																																		
22500	-6.19	-4.51	-2.83																																																		
25000	-7.87	-5.71	-3.55																																																		
26250	-8.75	-6.37	-3.99																																																		
30000	-11.53	-8.54	-5.56																																																		
33750	-14.45	-10.93	-7.41																																																		
37500	-17.41	-13.41	-9.41																																																		

Name	Characteristics			
✓ 40GBase-xR1 (41.25 Gb/s, ENET41250) Reference Receiver setting frequency response ¹⁰	At the time this document was published, the IEEE P802.3ba 40/100GbE task force had not yet defined the ORR specifications for 40GBase-xR1 serial variant(s). It was anticipated that a standard 4th-order Bessel-Thompson Scalar Frequency Response with reference frequency of 0.75x(nominal data rate), which is 0.75 x 40 GHz = 30.0 GHz, and tolerances of ±0.85 dB DC to 0.75x(nominal data rate) and expanding to ±4.0 dB at 1.5x(nominal data rate) will be specified.			
	Frequency (MHz)	Lower (dB)	Nominal (dB)	Upper (dB)
	0	-0.85	0	0.85
	6000	-0.96	-0.11	0.74
	12000	-1.30	-0.45	0.40
	18000	-1.87	-1.02	-0.17
	24000	-2.71	-1.86	-1.01
	30000	-3.86	-3.00	-2.16
	36000	-6.19	-4.51	-2.83
	40000	-7.87	-5.71	-3.55
	42000	-8.75	-6.37	-3.99
	48000	-11.53	-8.54	-5.56
	54000	-14.45	-10.93	-7.41
	60000	-17.41	-13.41	-9.41

- 1 Single-mode fiber (Corning SMF-28 specs).
- 2 The optical input powers below nondestructive levels may exceed saturation and compression limits of the module.
- 3 The optical wavelengths that the product accepts and still provides a reasonable (25% of peak optimum) wavelength conversion gain.
- 4 Vertical accuracy specifications are referenced to an internal optical power meter reading for a given optical input, and limited to a temperature range within ±3.5 °C of previous channel compensation and an ambient temperature within 20 °C to 35 °C.
- 5 Optical bandwidth is the frequency at which the responsivity of the optical to electrical conversion process is reduced by 50% (6 dB).
- 6 Optical bandwidth of the 50 GHz module is defined as (0.48/risetime).
- 7 This specification is limited to the instrument operating in an ambient temperature between +20 °C and +30 °C. Nominal freq response is specified for optical input signals of modulation magnitude such that 2mV_{pp} or less signal is applied at the sampler input.
- 8 The optical channel noise with no optical noise input (Dark Level).
- 9 Clock recovery versions reduce the power reaching the vertical channel (splitter to clock recovery produces loss). Therefore, the non-clock recovery modules more closely exhibit the typical noise performance.
- 10 The factory calibration and verification of these tolerances are performed in a stable ambient environment of +25 °C ± 2 °C. The module is specified to perform within these tolerances over an operating temperature range of +20 °C and +30 °C.
- 11 Certain performance characteristics such as reference receiver and filter settings may have more restricted power levels in order to maintain guaranteed performance.
- 12 The 80C07B optical noise specifications given are for the 1310 nm wavelength setting. The noise at wavelength setting 780 nm is typically increased by a factor of 2.0. The noise at 850 nm is typically increased by a factor of 1.6. The noise at 1550 nm is typically the same as at 1310 nm.

Table 13: Optical power meter

Name	Characteristics
Optical power meter range	
	80C02, 80C07B, 80C11 +4 dBm to -30 dBm, typical
	80C10, 80C10B, 80C25GBE +13 dBm to -21 dBm, typical
	80C08C, 80C12 +0 dBm to -30 dBm, typical
Optical power meter accuracy, typical	5% of reading + connector uncertainty (typical): 780 nm \pm 20 nm (80C07B, 80C08C) 850 nm \pm 20 nm (80C07B, 80C08C, 80C12) 1310 nm \pm 20 nm and 1550 nm \pm 20 nm (80C02, 80C07B, 80C08C, 80C10, 80C10B, 80C11, 80C12, 80C25GBE)

Table 14: Optical modules - Clock recovery options (CR, CR1, CR2, CR3, and CR4)

Name	Characteristics
Effective wavelength range (clock recovery path)	
80C02	1270 nm to 1600 nm
80C07B, 80C08C, 80C12	700 nm to 1650 nm
80C11	1270 nm to 1600 nm
Operating data rates ⁵	
80C02-CR	9.95328Gb/s \pm 1000ppm (OC-192/STM-64)
80C07B-CR1	155.52Mb/s \pm 1000ppm (OC-3/STM-1)
	622.08Mb/s \pm 1000ppm (OC-12/STM-4)
	1062.5Mb/s \pm 1000ppm (FC1063/FC)
	1250Mb/s \pm 1000ppm (ENET1250/GBE)
	2125Mb/s \pm 1000ppm (FC2125/2FC)
	2488.32Mb/s \pm 1000ppm (OC-48/STM-16)
	2500Mb/s \pm 1000ppm (ENET2500/2GBE)
	2500Mb/s \pm 1000ppm (Infiniband)
80C08C-CR1	2666.06Mb/s \pm 1000ppm (OC-48-FEC)
	9.95328Gb/s \pm 1000ppm (10GBASE-W)
	10.3125Gb/s \pm 1000ppm (10GBASE-R)
80C08C-CR2	10.3125Gb/s \pm 1000ppm (10GBASE-R)
	10.51875Gb/s \pm 1000ppm (10GFC)
80C08C-CR4	Continuous from 9.8 Gb/s to 12.6 Gb/s (User must enter the bit rate into the main instrument with an accuracy better than 1000 ppm)
	Predefined selections at 9.95338 Gb/s, 10.3125 Gb/s, 10.51875 Gb/s, 10.66423 Gb/s, 10.709225 Gb/s, 11.0957 Gb/s
	(The input bit rate must be within 1000 ppm of the selected rate)

Table 14: Optical modules - Clock recovery options (CR, CR1, CR2, CR3, and CR4) (cont.)

Name	Characteristics
80C11-CR1	9.95328 Gb/s \pm 1000ppm (OC-192/STM-64)
80C11-CR2	9.95328 Gb/s \pm 1000ppm (OC-192/STM-64)
80C11-CR3	10.66423 Gb/s \pm 1000ppm (10Gb FEC)
80C11-CR3	9.95328 Gb/s \pm 1000ppm (OC-192/STM-64)
80C11-CR4	10.70922 Gb/s \pm 1000ppm (G.709 FEC) Continuous from 9.8 Gb/s to 12.6 Gb/s (User must enter the bit rate into the main instrument with an accuracy better than 1000 ppm) Pre-defined selections at 9.95338 Gb/s, 10.3125 Gb/s, 10.51875 Gb/s, 10.66423 Gb/s, 10.709225 Gb/s, 11.0957 Gb/s (The input bit rate must be within 1000 ppm of the selected rate)
80C12	Clock recovery provided with the use of the 80A05 Electrical Clock Recovery module or the 80A07 CR instrument.

For the 80C02-CR module, the incoming data stream must be of non-return-to-zero format (NRZ) and must have a data sequence content which provides both isolated 1s and multi-consecutive mark sequences (that is 2,3,4 and so forth logical 1s in a consecutive row). Note that a fixed pattern of 10101010. . . does not meet the data sequence content: The 80C02-CR clock recovery functions may not properly lock to such a pattern. The 80C02-CR will, however, typically lock to a 11001100. . . pattern (this is equivalent to a 2.48832 GHz optical square wave).⁵

Table 14: Optical modules - Clock recovery options (CR, CR1, CR2, CR3, and CR4) (cont.)

Name	Characteristics	
✓ Optical sensitivity range, clock recovery (optical input power) ¹	<i>Maximum</i>	<i>Minimum</i>
80C02	+7.0 dBm (5.0 mW), typical	-10.0 dBm (100 μ W), typical -7.5 dBm, warranted
80C07B	-4.0 dBm (400 μ W), warranted	-16.0 dBm (25 μ W), warranted
80C08C-CR1/ -CR2	+0.0 dBm (1.0 mW), typical	1550 nm, 1310 nm -15.0 dBm (32 μ W), typical -13 dBm (50 μ W), warranted ⁶ 850 nm, 780 nm -12 dBm (64 μ W), typical
80C08C-CR4	+0.0 dBm (1.0 mW), typical	Bit Rate: 9.8 Gb/s to 11.25 Gb/s 1550 nm, 1310 nm AOP @ (OMA) ⁸ ER \geq 8.2 dB ⁷ -15 dBm typical -12.3 dBm typical -13 dBm -11.3 dBm warranted ⁶ warranted ⁶ Bit Rate: 9.8 Gb/s to 11.25 Gb/s 850 nm, 780 nm AOP @ (OMA) ⁸ ER \geq 8.2 dB ⁷ -12 dBm typical -9.3 dBm typical -10 dBm -8.3 dBm warranted ⁶ warranted ⁶ Bit Rate: 11.25 Gb/s to 12.6 Gb/s 1550 nm, 1310 nm AOP @ (OMA) ⁸ ER \geq 8.2 dB ⁷ -12.5 dBm typical -10.8 dBm typical -11.5 dBm -9.8 dBm warranted ⁶ warranted ⁶ Bit Rate: 11.25 Gb/s to 12.6 Gb/s 850 nm, 780 nm AOP @ (OMA) ⁸ ER \geq 8.2 dB ⁷ -9.5 dBm typical -7.8 dBm typical -8.5 dBm -6.8 dBm warranted ⁶ warranted ⁶
80C11-CR1/-CR2/-CR3	+7 dBm (5.0 mW), typical	-10.0 dBm (100 μ W), typical -7.5 dBm, warranted ⁶

Table 14: Optical modules - Clock recovery options (CR, CR1, CR2, CR3, and CR4) (cont.)

Name	Characteristics		
80C11-CR4	+7 dBm (5.0 mW), typical	<i>Bit Rate: 9.8 Gb/s to 11.25 Gb/s</i>	
		AOP @	(OMA) ⁸
		<i>ER ≥ 8.2 dB⁷</i>	
		-12 dBm typical	-10.3 dBm typical
		-9 dBm warranted ⁶	-7.3 dBm warranted ⁶
		<i>Bit Rate: 11.25 Gb/s to 12.6 Gb/s</i>	
		AOP @	(OMA) ⁸
		<i>ER ≥ 8.2 dB⁷</i>	
		-10.5 dBm typical	-8.8 dBm typical
		-7.5 dBm warranted ⁶	-5.8 dBm warranted ⁶
80C12 Clock recovery provided by 80A05 module	0 dBm (1.0 mW), typical	<i>Bit Rate: 150 Mb/s to 2.7 Gb/s 1550 nm, 1310 nm</i>	
		AOP @	(OMA) ⁸
		<i>ER ≥ 8.2 dB⁷</i>	
		-13.1 dBm (48.6 μW) warranted ⁶	-11.5 dBm (71.4 μW) warranted ⁶
		<i>Bit Rate: 150 Mb/s to 2.7 Gb/s 850 nm</i>	
		AOP @	(OMA) ⁸
		<i>ER ≥ 8.2 dB⁷</i>	
		-11.5 dBm (70.7 μW) typical	-9.8 dBm (104 μW) typical
		<i>Bit Rate: 2.7 Gb/s to 11.19 Gb/s 1550 nm, 1310 nm</i>	
		AOP @	(OMA) ⁸
<i>ER ≥ 8.2 dB⁷</i>			
-11.4 dBm (72.8 μW) warranted ⁶	-9.7 dBm (107 μW) warranted ⁶		
<i>Bit Rate: 2.7 Gb/s to 11.19 Gb/s 850 nm</i>			
AOP @ ER ≥ 8.2 dB ⁷	(OMA) ⁸		
-9.7 dBm (106 μW) typical	-8.1 dBm (156 μW) typical		

Table 14: Optical modules - Clock recovery options (CR, CR1, CR2, CR3, and CR4) (cont.)

Name	Characteristics	
80C12 Clock recovery provided by 80A05 module, continued	0 dBm (1.0 mW), typical	<i>Bit Rate: 11.19 Gb/s to 12.5 Gb/s 1550 nm, 1310 nm</i>
	AOP @ ER ≥ 8.2 dB ⁷	(OMA) ⁸
	-10.1 dBm (97.2 μW) warranted ⁶	-8.5 dBm (143 μW) warranted ⁶
	<i>Bit Rate: 11.19 Gb/s to 12.5 Gb/s 850 nm</i>	
	AOP @ ER ≥ 8.2 dB ⁷	(OMA) ⁸
	-8.5 dBm (141 μW) typical	-6.8 dBm (208 μW) typical
Clock and data electrical output amplitudes ²		
80C02	Serial DATA output	> 700 mV _{pp} , typical
	Serial CLOCK output	1.5 V _{pp} , typical
	1/16th CLOCK output	600 mV _{pp} , typical
80C07B	Serial CLOCK output	450 mV _{pp} , typical
	Serial DATA output	450 mV _{pp} , typical
80C08C-CR1/ -CR2	Serial CLOCK output	1.0 V _{pp} , typical
	1/16th CLOCK output	600 mV _{pp} , typical
80C08C-CR4	Serial CLOCK output	800 mV _{pp} , typical
	1/16th CLOCK output	600 mV _{pp} , typical
80C11-CR1	Serial DATA output	> 700 mV _{pp} , typical
	Serial CLOCK output	900 mV _{pp} , typical
	1/16th CLOCK output	600 mV _{pp} , typical
80C11-CR2/ -CR3	Serial CLOCK output	1.5 V _{pp} , typical
	1/16th CLOCK output	600 mV _{pp} , typical
80C11-CR4	Serial CLOCK output	800 mV _{pp} , typical
	1/16th CLOCK output	600 mV _{pp} , typical
80C12	ELECTRICAL SIGNAL OUT	400 mV _{pp} , maximum (dependent on optical input amplitude)
Clock and data rise time and fall times ²		
80C02	Serial DATA output	< 30 ps
	Serial CLOCK output	< 30 ps
	1/16th CLOCK output	< 300 ps
80C07B	Serial DATA output	< 150 ps
	Serial CLOCK output	< 150 ps

Table 14: Optical modules - Clock recovery options (CR, CR1, CR2, CR3, and CR4) (cont.)

Name	Characteristics
80C08C	Serial CLOCK output < 30 ps
	1/16th CLOCK output < 300 ps
80C11	Serial CLOCK output < 30 ps
	1/16th CLOCK output < 300 ps
Jitter Transfer Bandwidth ⁵	
80C08C-CR1, 80C08C-CR2	4 MHz maximum 2 MHz minimum
80C08C-CR4	4 MHz maximum 2 MHz minimum 1 MHz typical
80C11-CR1 80C11-CR2 80C11-CR3	8 MHz maximum 5 MHz minimum 7 MHz typical
80C11-CR4	4 MHz Maximum 1 MHz Minimum 2 MHz Typical
✓ Recovered clock timing jitter ^{3 4}	
80C02	< 2.0 ps _{rms} maximum < 1.0 ps _{rms} typical ⁵
80C07B	OC-3 setting < 32.0 ps _{rms} maximum < 12.0 ps _{rms} typical
	OC-12 setting < 8.0 ps _{rms} maximum
	FC1063 (FC) setting < 4.0 ps _{rms} typical
	ENET1250 (GBE) setting
	FC2125 (2FC) setting < 6.0 ps _{rms} maximum < 3.0 ps _{rms} typical
	OC-48 setting < 4.0 ps _{rms} maximum OC-48-FEC setting < 2.2 ps _{rms} typical ENET2500 (2GBE) setting INFINIBAND setting
80C08C	< 2.0 ps _{rms} maximum < 1.0 ps _{rms} typical ⁵
80C11	< 2.0 ps _{rms} maximum < 1.0 ps _{rms} typical ⁵

¹ These powers are the average optical input coupled into the external Optical Sampling Module optical input connector. The range is defined for recovered clock, a 50% duty cycle of the incoming NRZ data (also referred to as 50% mark density), a PRBS pattern of 223-1, and an extinction ratio of ≥ 8.2 dB (at eye center).

² Output is 50 Ω AC coupled: specification is for output amplitude at the bulkhead outputs and does not include RF loss of attached cables.

³ The clock jitter is applicable to both the external electrical output and the system jitter experienced when the recovered clock is the source of the waveform trigger for the system.

⁴ Jitter performance of the system while using the optical module clock recovery as the trigger source is warranted only while no active signal is applied to the main instrument's External Trigger (or Prescaler) input.

⁵ Internal use for trigger results in a total system jitter of $\geq \sqrt{\text{sum of squares}}$; therefore, the displayed waveform may normally exhibit: $\sqrt{(\text{mainframe jitter}^2 + \text{OCR jitter}^2)}$

⁶ Sensitivity is only warranted for operating ambient temperatures below +30 °C.

- ⁷ The AOP (Average Optical Power) range is defined for recovered clock that has a resulting jitter that is less than the specified maximum, a 50% duty cycle of the incoming data (also referred to as 50% mark density), a PRBS pattern of 2²³ -1, and an extinction ratio of ≥ 8.2 dB (at eye center).
- ⁸ The OMA (Optical Modulation Amplitude) input level is defined as (PHIGH - PLOW). For an extinction ratio of 8.2, the OMA is 1.47 AOP or AOP(dBm) + 1.68 dB.
- ⁹ The acceptable signal types and patterns for the specified modules are shown in the following table. (See Table 15.)

Table 15: Acceptable signal types and patterns

Module	NRZ	RZ	1010...
80C02-CR	Y	N	N
80C07B-CR1	Y	N	Y
80C08B-CR2	Y	Y	Y

Table 16: Optical modules - Mechanical

Name	Characteristics
Construction material	Chassis parts constructed of aluminum alloy; front panel constructed of plastic laminate; circuit boards constructed of glass-laminate. Cabinet is aluminum.
Weight	
80C02	0.95 kg (2.10 lbs) 1.22 kg (2.70 lbs) (with clock recovery)
80C07B	0.95 kg (2.10 lbs) 1.36 kg (3.0 lbs) (with clock recovery)
80C08C	0.95 kg (2.10 lbs) 1.22 kg (2.70 lbs) (with clock recovery)
80C10, 80C10B, 80C25GBE	0.95 kg (2.10 lbs)
80C11	0.95 kg (2.1 lbs) 1.22 kg (2.70 lbs) (with clock recovery)
80C12	1.31 kg (2.89 lbs)) (F1, F2, F3, F4, F5, F6, FC) 0.98 kg (2.16 lbs) (option 10G)
Overall dimensions	Height: 25.6 mm (1.0 in) Width: 166.7 mm (6.5 in) Depth: 307.7 mm (12.0 in)

NOTE. For environmental specifications, refer to the documentation for your main instrument.

Glossary

Accuracy

The closeness of the indicated value to the true value.

Analog-to-Digital Converter

A device that converts an analog signal to a digital signal.

Attenuation

A decrease in magnitude (for optical systems this is usually optical power) of a signal.

Autoset

A means of letting the instrument set itself to provide a stable and meaningful display of a given waveform.

Average Optical Power (AOP)

The time averaged measurement of the optical power over a much longer time period than the bit rate of the signal.

Bandwidth

The difference between the limiting frequencies of a continuous frequency spectrum. Bandwidth is the frequency at which the power out is one half the power out at a frequency near DC. The range of frequencies handled by a device or system. Bandwidth is a measure of network capacity. Analog bandwidth is measured in cycles per second. Digital bandwidth is measured in bits of information per second. (See page 29, *Optical Bandwidth*.)

Channel

A place to connect a signal or attach a network or transmission line to sampling heads. Also, the smallest component of a math expression. A transmission path between two or more stations.

Channel Number

The number assigned to a specific signal input connector. The top channel of the left-most sampling head compartment of the main instrument is always channel 1, regardless of any repositioning or omission of sampling heads.

Clock

A signal that provides a timing reference.

Common Mode

A circumstance where a signal is induced in phase on both sides of a differential network.

dB

Decibel: a method of expressing power or voltage ratios. The decibel scale is logarithmic. It is often used to express the efficiency of power distribution systems when the ratio consists of the energy put into the system divided by the energy delivered (or in some cases, lost) by the system. One milliwatt of optical power is usually the optical reference for 0 dBm. The formula for decibels is:

$$dB = 20 \log \left(\frac{V_i}{V_l} \right) \text{ for optical, } db = \left(\frac{P_o}{P_i} \right)$$

where V_i is the voltage of the incident pulse, V_l is the voltage reflected back by the load, P_o is the power out, and P_i is the power in. (See page 29, *Optical Bandwidth*.)

dBm

A logarithmic measure of power referenced to 1 milliwatt (1 mW optical power = 0.0 dBm):

Degradation

A deterioration in a signal or system.

Differential Mode

A method of signal transmission where the true signal and its logical complement are transmitted over a pair of conductors.

Digital signal

A signal made up of a series of on and off pulses.

Digital transmission system

A transmission system where information is transmitted in a series of on and off pulses.

Extinction Ratio

The ratio of two optical power levels of a digital signal generated by an optical source. P_1 is the optical power level generated when the light source is high, and P_2 is the power level generated when the light source is low.

$$r_e = \frac{P_1}{P_2}$$

FEC: Forward Error Correction

Additional bits and/or coding added to a data stream to allow for automatic error detection and correction at the receiving end. These extra bits and/or coding tend to increase a serial data rate above the original non-FEC data stream in order to accommodate the extra information added by the FEC.

Fiber Optics

A method of transmitting information in which light is modulated and transmitted over high-purity, filaments of glass. The bandwidth of fiber optic cable is much greater than that of copper wire.

Impedance

The opposition to an AC signal in the wire. It's very much like resistance to a DC signal in a DC circuit. Impedance is made up of resistance and inductive and capacitive reactance.

Initialize

Setting the instrument main instrument to a completely known, default condition.

Internal Clock

An internally generated trigger source that is synchronized with the Internal Clock Output signal.

Mode

A stable condition of oscillation in a laser. A laser can operate in one mode (single mode) or in many modes (multimode).

Modulation

A process whereby a signal is transformed from its original form into a signal that is more suitable for transmission over the medium between the transmitter and the receiver.

Multimode Cable

A thick cored optical fiber (compared to single mode cable) that can propagate light of multiple modes.

OMA (Optical Modulation Amplitude)

The difference between the average power levels of the logic 1 level, High, and the logic 0 level, Low, of the optical pulse signal. The levels are the Means of the logical levels sampled within an Aperture of the logical 1 and 0 regions of the pulse. The logical 1 and 0 time intervals are marked by the crossings of a reference level determined as the Average Optical Power (AOP) of the signal.

Protocol

Formal conventions that govern the format and control of signals in a communication process.

Recovered Clock

A clock signal derived from and synchronous with a received data sequence.

Setting

The state of the front panel and system at a given time.

Single-Mode Cable

An optical cable with a very small core diameter (usually in the range of 2-10 microns). Such cables are normally used only with laser sources due to their very small acceptance cone. Since the cone diameter approaches the wavelength of the source, only a single mode is propagated.

Trigger

An electrical event that initiates acquisition of a waveform as specified by the time base.

Waveform

The visible representation of an input signal or combination of signals.

Index

Symbols and Numbers

1/16 CLOCK, 29

A

Accessories, 6
list, 6
optional, 8
standard, 8
Accuracy, 38, 39, 65
optimizing, 20
Adjustments, 19
Analog-to-Digital converter, 65
AOP
average optical power, 65
Attenuating optical signals, 15
Attenuation, 65
Autoset, 65

B

Bandwidth, 40, 65
optical, description, 29
selection, 27

C

Channel, 65
number, 65
selection, 16
Cleaning
module, 25
optical connectors, 21
Clock, 65
continuous rate, 29, 58
recovery, 28, 57
recovery outputs, 17
CLOCK
output, 29
Common mode, 66
Compensation
dark-level, 23
vertical, 20
wavelength gain, 23
Connecting optical signals, 13

D

Dark-level compensation
how to perform, 23
Data
recovery, 28
DATA
output, 29
Data rates, 57
dB, 66
dBm, 66
Decibel, 66
Degradation, 66
Differential mode, 66
Digital signal, 66
Digital transmission system, 66

E

Electrostatic discharge, 9
Extinction ratio, 66
Extinction ratio calibration, 31

F

Features, 2
FEC, 67
Fiber optics, 67
Filter selection, 27
Forward Error Correction, 67
Front panel controls, 16

G

Getting started, 1

H

Hold down screws, 18

I

Impedance, 67
Initialize, 67
Input connector, 17
Installation, 9
Internal clock, 67

M

Main instrument commands, 18
Manuals
part numbers, 8
Maximum input, 36
Measurement accuracy
optimizing, 20
Mode, 67
Modulation, 67
Multimode cable, 67

N

Noise, 44

O

OMA
optical modulation
amplitude, 67
Operating basics, 13
Optical
dark-level compensation, 23
input connector, 17
vertical compensation, 20
wavelength gain
compensation, 23
Optimizing measurement
accuracy, 20
Optional accessories list, 8
Options
list, 6
Outputs
clock, 17
data, 17

P

Procedure
perform dark-level
compensation, 23
perform user wavelength gain
compensation, 23
perform vertical
compensation, 20

Product description, 2
Programmer interface, 19
Protocol, 68

R

Receive signals
 recovered 1/16 clock, 29
 recovered clock, 29
 recovered data, 29
Recovered
 1/16 clock, 29
 clock, 29, 68
 data, 29
Reference, 27
 receivers, 47, 48

S

Safety Summary, iv

Sampling head features, 2
SELECT CHANNEL button, 16
Setting, 68
Single-mode cable, 68
Specifications, 33
Standard accessories, 8
System interaction, 15

T

Trigger, 68

U

Usage, 13
User adjustments, 19
User wavelength compensation
 how to perform, 23

V

Vertical accuracy, 38, 39
Vertical compensation
 how to perform, 20

W

Waveform, 68
Wavelength
 range, 57
 selection, 27
Wavelength gain
 compensation, 23